



ADHESIS

LA DÉCORATION ADHÉSIVE

4 RUE DE NORMANDIE
78630 - ORGEVAL FR
01.39.08.10.40
c.domingues@plastic-systems.fr

BENIF

2021
-
2022


Interior Film



ADHESIS

LA DÉCORATION ADHÉSIVE

 LX Hausys

www.lxhausys.com

BENIF

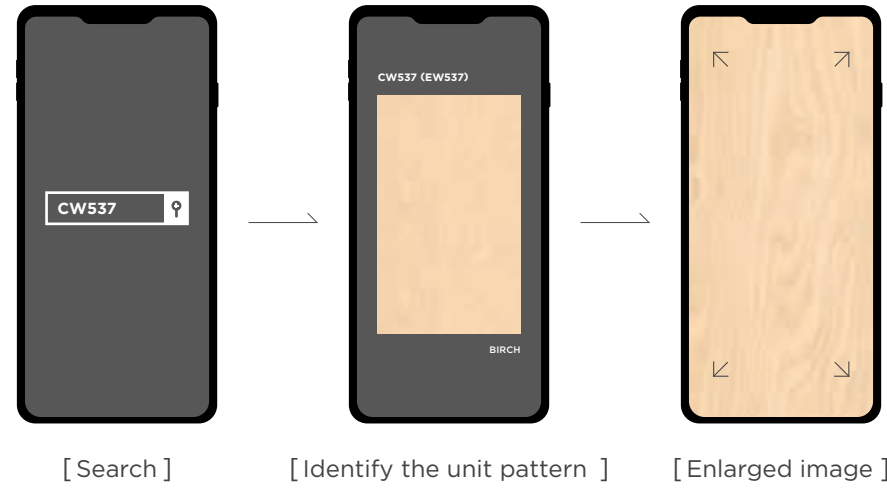
 Interior Film



Design Book

※ Check the color images of LX Z:IN Interior Film BENIF right away in the online Design Book.
(Available for both mobile and PC)

1. You can clearly see the unit pattern(repeated pattern) and enlarged images of the product.



2. LX Z:IN will pre-release new BENIF products via the online design book first prior to the new sample book. Check the new product release information from time to time.



Color Chart

※ Remodel LX Z:IN doors and windows with LX Z:IN interior film.
You can check the color chart of the deco sheets and interior films.

CONTENTS

INDEX	04
SOLID	08
METAL	20
CLASSIC WOOD	24
BIG WOOD	34
PREMIUM WOOD	40
WOOD	52
BIG MARBLE	66
MARBLE / STONE	70
FANCY / LEATHER	76
OUTDOOR	78

TIPs for How to Use the Sample Book ^{Tip}

N : This is a new product to be released in 2021.

() : Number () is the non-flame-retardant color number.

! : Be sure to follow the application instructions at the back of the sample book for the relevant color.

📷 : The color is applied to the photographic image.

SOLID
솔리드

- GM001 08
- GS001 08
- GS002 08
- RB08 (ESB08) 11
- RE03 (ESE03) 11
- RS13 (ES13) 08
- RS21 (ES21) 11
- RS22 (ES22) 09
- RS27 (ES27) 11
- RS31 (ES31) 11
- RS35 (ES35) 09
- RS40 (ES40) 08
- RS45 (ES45) 10
- RS46 (ES46) 10
- RS47 (ES47) 10
- RS48 (ES48) 10
- RS49 (ES49) 08
- RS51 (ES51) 09
- RS52 (ES52) 09
- RS55 (ES55) 09
- RS56 (ES56) 09
- RS57 (ES57) 08
- RS58 (ES58) 11
- RS61 (ES61) 11
- RS62 (ES62) 11
- RS68 (ES68) 09
- RS69 (ES69) 08
- RS70 (ES70) 08
- RS71 (ES71) 08
- RS76 (ES76) 10
- RS81 (ES81) 11
- RS82 (ES82) 11
- RS84 (ES84) 11
- RS86 (ES86) 08
- RS87 (ES87) 11
- RS88 (ES88) 11
- RS89 (ES89) 11
- RS90 (ES90) 11
- RS91 (ES91) 09
- RS92 (ES92) 08
- RS98 (ES98) 12
- RS100 (ES100) 10
- RS101 (ES101) 12
- RS103 (ES103) 13
- RS104 (ES104) 12
- RS105 (ES105) 12
- RS106 (ES106) 12
- RS107 (ES107) 12
- RS108 (ES108) 13
- RS109 (ES109) 13
- RS110 (ES110) 12
- RS116 (ES116) 12
- RS117 (ES117) 13
- RS118 (ES118) 09
- RS119 (ES119) 09
- RS120 (ES120) 11
- RS121 (ES121) 09
- RS122 (ES122) 11
- RS123 (ES123) 11
- RS124 (ES124) 08
- RS125 (ES125) 09
- RS126 (ES126) 10
- RS127 (ES127) 11
- RS128 (ES128) 11
- RS129 (ES129) 13
- RS130 (ES130) 08
- RS131 (ES131) 08
- RS132 (ES132) 08
- RS133 (ES133) 08
- RS134 (ES134) 09
- RS135 (ES135) 09
- RS136 (ES136) 09
- RS137 (ES137) 10
- RS138 (ES138) 12
- RS139 (ES139) 12
- RS140 (ES140) 12
- RS141 (ES141) 13
- RS142 (ES142) 13
- RS144 (ES144) 12
- RS145 (ES145) 12
- RS148 (ES148) 13
- RS149 (ES149) 13
- RS150 (ES150) 12
- RS151 (ES151) 13
- (ES158) 09
- RS159 (ES159) 12
- RS160 (ES160) 12
- RS161 (ES161) 13
- RS162 (ES162) 13
- RS163 (ES163) 10
- RS164 (ES164) 09
- RS165 (ES165) 10
- RS166 (ES166) 11
- RS167 (ES167) 10
- RS168 (ES168) 10
- RS170 (ES170) 13
- RS171 (ES171) 08
- RS172 (ES172) 09
- RS173 (ES173) 13
- RS174 (ES174) 12
- RS175 (ES175) 13
- RS176 (ES176) 09
- RS177 (ES177) 10
- RS178 (ES178) 10
- RSCJ1 (ES CJ1) 10
- RSK1 (ES CK1) 11
- RSH01 (ES H01) 08
- RSH05 (ES H05) 08
- RSH01 (ES H01) 08
- RSH05 (ES H05) 08
- RSJD1 (HS JD1) 12
- RSJD2 (HS JD2) 13
- RSP01 (ES P01) 12
- RSP02 (ES P02) 13
- RGM01 (EG M01) 15
- RGM02 (EG M02) 15
- RGM03 (EG M03) 15
- RGM04 (EG M04) 15
- RGM05 (EG M05) 15
- RGM06 (EG M06) 15
- RGM10 (EG M10) 15
- RGM11 (EG M11) 15
- SMO01 16
- SMO02 16
- SMO03 16
- SMO04 16
- SMO05 17
- SMO06 17
- SMO07 17
- SMO08 17
- SMO09 17
- SMO10 17
- SF001 19
- SF002 19
- SF003 18
- SF004 19
- SF005 19
- SF006 19

SF007 19
SF008 19
SF009 19
SF010 19

METAL
메탈

- MS01 23
- MS09 22
- MS18 22
- MS19 23
- MS20 23
- MS21 22
- RP03 23
- RP04 23
- RP06 22
- RP08 23
- RP42 23
- RP45 22
- RP46 23
- RP47 22
- RP48 22
- RP49 23
- RP50 23
- RP51 23
- RP52 22
- RP53 23
- PM001 20
- PM002 21
- PM003 20
- PM004 21
- PM005 20
- PM006 21
- PM007 21
- PM008 20
- PM009 21
- PM010 21

CLASSIC WOOD
클래식 우드

- PW101 32
- PW102 32

- PW103 32
- PW104 33
- PW105 31
- PW106 31
- PW107 32
- PW108 33
- PW109 30
- PW110 31
- PW111 30
- PW112 30
- PW113 31
- PW114 32
- PW115 33
- PW116 30
- PW117 30
- PW118 31
- PW119 31
- PW120 30
- PW121 32
- PW122 33
- PW123 27
- PW124 27
- PW125 27
- PW126 25
- PW127 25
- PW128 25
- PW129 25
- PW130 25
- PW131 25
- PW132 29
- PW133 29
- PW134 29
- PW135 29
- PW136 29
- PW137 29
- PW138 27
- PW139 27
- PW140 27

BIG WOOD
빅 우드

- BW001 39
- BW002 39
- BW003 39

- BW004 39
- BW005 39
- BW006 39
- BW007 35
- BW008 35
- BW009 35
- BW010 37
- BW011 37
- BW012 37
- BW013 37
- BW014 37
- BW015 37

PREMIUM WOOD
프리미엄 우드

- NW006 (NE006) 49
- NW007 (NE007) 51
- NW008 (NE008) 51
- NW014 (NE014) 47
- NW015 (NE015) 44
- NW017 (NE017) 45
- NW032 (NE032) 46
- NW033 (NE033) 47
- NW034 (NE034) 49
- NW038 (NE038) 47
- NW039 (NE039) 48
- NW041 (NE041) 41
- NW042 (NE042) 49
- NW043 (NE043) 50
- NW044 (NE044) 49
- NW045 (NE045) 50
- NW046 (NE046) 51
- NW053 (NE053) 40
- NW055 (NE055) 51
- NW056 (NE056) 45
- NW057 (NE057) 47
- NW058 (NE058) 50
- NW059 (NE059) 48
- NW060 (NE060) 51
- NW062 (NE062) 48
- NW063 (NE063) 51
- NW067 (NE067) 50
- NW068 (NE068) 45
- NW070 (NE070) 48

- NW071 (NE071) 46
- NW072 (NE072) 48
- NW073 (NE073) 46
- NW078 (NE078) 47
- NW080 (NE080) 40
- NW082 (NE082) 42
- NW083 (NE083) 42
- NW084 (NE084) 43
- NW085 (NE085) 46
- NW086 (NE086) 43
- NW087 (NE087) 50
- NW088 (NE088) 49
- NW089 (NE089) 43
- NW090 (NE090) 51
- NW092 (NE092) 42
- NW099 (NE099) 41
- NW100 (NE100) 42
- NW101 (NE101) 43
- NW102 (NE102) 40
- NW104 (NE104) 51
- NW109 (NE109) 43
- NW110 (NE110) 41
- NW111 (NE111) 40
- NW112 (NE112) 46
- NW113 (NE113) 42
- NW114 (NE114) 41
- NW116 (NE116) 40
- NW117 (NE117) 45
- NW118 (NE118) 44
- NW119 (NE119) 44
- NW120 (NE120) 41
- NW121 (NE121) 45
- NW122 (NE122) 44
- NW123 (NE123) 44

WOOD
우드

- CW44 (EW44) 62
- CW69 (EW69) 62
- CW79 (EW79) 62
- CW87 (EW87) 61
- CW88 (EW88) 61
- CW111 (EW111) 62
- CW124 (EW124) 62

- CW141 (EW141) 63
- CW142 (EW142) 63
- CW150 (EW150) 62
- CW151 (EW151) 59
- CW152 (EW152) 61
- CW154 (EW154) 63
- CW175 (EW175) 63
- CW177 (EW177) 61
- CW240 (EW240) 57
- CW258 (EW258) 62
- CW292 (EW292) 54
- CW314 (EW314) 60
- CW316 (EW316) 61
- CW320 (EW320) 60
- CW330 (EW330) 61
- CW348 (EW348) 61
- CW356 (EW356) 61
- CW358 (EW358) 59
- CW370 (EW370) 60
- CW390 (EW390) 53
- CW407 (EW407) 55
- CW408 (EW408) 55
- CW424 (EW424) 52
- CW427 (EW427) 62
- CW431 (EW431) 54
- CW437 (EW437) 52
- CW438 (EW438) 63
- CW441 (EW441) 59
- CW453 (EW453) 63
- CW454 (EW454) 60
- CW455 (EW455) 62
- CW459 (EW459) 64
- CW466 (EW466) 61
- CW469 (EW469) 61
- CW506 (EW506) 57
- CW509 (EW509) 57
- CW510 (EW510) 53
- CW511 (EW511) 52
- CW512 (EW512) 59
- CW513 (EW513) 61
- CW518 (EW518) 58
- CW519 (EW519) 60
- CW521 (EW521) 56
- CW523 (EW523) 63
- CW527 (EW527) 57
- CW530 (EW530) 56

- CW531 (EW531) 63
- CW533 (EW533) 57
- CW534 (EW534) 59
- CW535 (EW535) 60
- CW537 (EW537) 63
- CW544 (EW544) 56
- CW552 (EW552) 56
- CW554 (EW554) 60
- CW556 (EW556) 53
- CW557 (EW557) 59
- CW575 (EW575) 57
- CW579 (EW579) 61
- CW582 (EW582) 60
- CW590 (EW590) 63
- CW597 (EW597) 57
- CW598 (EW598) 62
- CW599 (EW599) 58
- CW600 (EW600) 57
- CW601 (EW601) 60
- CW602 (EW602) 60
- CW603 (EW603) 57
- CW604 (EW604) 58
- CW605 (EW605) 59
- CW606 (EW606) 53
- CW609 (EW609) 60
- CW611 (EW611) 53
- CW612 (EW612) 64
- CW615 (EW615) 57
- CW616 (EW616) 54
- CW618 (EW618) 57
- CW619 (EW619) 54
- CW621 (EW621) 64
- CW622 (EW622) 64
- CW624 (EW624) 55
- CW626 (EW626) 59
- CWAC1 (EWAC1) 60
- CWB1 (EWB1) 62
- CWPF3 (EWPF3) 54
- CWSH2 (EWSH2) 59
- DW157 (EW157) 62
- DW159 (EW159) 58
- DW161 (EW161) 57
- DW179 (EW179) 59
- DW180 (EW180) 62
- DW182 (EW182) 57
- DW190 (EW190) 61

- DW207 (EW207) 63
- DW307 (EW307) 58
- DW308 (EW308) 59
- DW350 (EW350) 62
- DW371 (EW371) 61
- DW388 (EW388) 53
- DW398 (EW398) 62
- DW400 (EW400) 64
- DW406 (EW406) 52
- DW456 (EW456) 54
- DW467 (EW467) 55
- DW548 (EW548) 57
- DW549 (EW549) 58
- DW550 (EW550) 59
- DW576 (EW576) 59
- DW629 (EW629) 64
- DW631 (EW631) 64
- DW633 (EW633) 52
- DW634 (EW634) 54
- DW635 (EW635) 54
- DW636 (EW636) 53
- DW637 (EW637) 54
- DW638 (EW638) 55
- DW639 (EW639) 56
- DW640 (EW640) 59
- DW641 (EW641) 60
- DW642 (EW642) 60
- DW643 (EW643) 56
- DW644 (EW644) 57
- DW645 (EW645) 59
- DW646 (EW646) 60
- DW647 (EW647) 53
- DW648 (EW648) 53
- DW649 (EW649) 55
- DW650 (EW650) 52
- FWES3 (EWES3) 61
- SW001 65
- SW002 65
- SW003 65
- SW004 65
- SW005 65
- SW006 65

BIG MARBLE
빅 마블

- BM001 69
- BM002 69
- BM003 69
- BM004 69
- BM005 69
- BM006 69
- BM007 68
- BM008 68
- BM009 66
- BM010 66
- BM011 67
- BM012 67

ABSTRACT
추상

- RM12 75
- ML13 77
- ML14 77
- ML22 73
- ML23 75
- ML24 75
- ML31 77
- ML45 76
- ML47 76
- ML48 76
- ML49 76
- ML56 75
- ML57 75
- ML58 75
- ML62 73
- ML64 73
- ML67 75
- ML71 71
- ML72 71
- ML73 71
- ML74 71
- ML75 70
- ML76 70
- ML77 70
- ML80 70

- ML81 74
- ML82 74

EL REINA
엘레이나

- ELO43 76
- ELO44 76
- ELO49 76
- ELO51 76
- EL176 73
- EL177 73
- EL178 73
- EL235 76

NATURE STONE
네이처 스톤

- NS002 73
- NS003 73

OUTDOOR
아웃도어

- (UM001) 79
- (UM002) 79
- (UP001) 79
- (UP002) 79
- (UP003) 79
- (US001) 78
- (US002) 78
- (US003) 78
- (US004) 78
- (US005) 78

FIRE SAFETY



FIRE SAFETY

LX Z:IN Interior Film BENIF is recognized for product safety by passing domestic and global fire safety certification tests to protect the life and safety of customers in case of fire.

INDOOR SPACE



Flame Retardant Performance Test

It is a Korean flame retardant performance certification. It is a nationally accredited certification obtained by measuring the flame retardant performance of interior finishing materials, and only good products that have passed the test among the products produced are being sold by indicating whether they are flame retardant. (Issuance of certification for each product)



CE Certification

It is a European Union(EU) safety verification standard. Not only the speed of fire, but also formaldehyde and heavy metal tests have been passed to prove the safety of the product for distribution in Europe. (Certification No. 2812-CPR-KA5007, KA5008)



UL certification

It has been certified for safety by conducting flame and smoke diffusion tests(UL723) by UL(Underwriters Laboratories), the global safety certification body. (Certification No. R26170)



Japanese flame retardant and F☆☆☆☆ certification

It is a fire safety and eco-friendly certification for building materials by the Japanese Ministry of Land, Infrastructure and Transport. BENIF products have been certified to be safe from flame retardancy and harmful substances by conducting tests on calorific value, gas hazard, and formaldehyde (Only for Japan-exclusive colors, certification No. NM-5207-5214, MFN-3704-3706).

RAILROAD



BENIF secured safety that can be used for railroads by conducting durability and safety tests of interior finishing materials for railroads by SGS testing institutes in India. (Test standard EN45545 HL 3 Grade(R1))

ECO-FRIENDLY



ENVIRONMENTAL FRIENDLINESS

LX Z:IN Interior Film BENIF is constantly striving to minimize harmful substances to the human body and environment in consideration of the safety and environment of customers and builders, and communicates eco-friendly products with customers.

HUMAN FRIENDLINESS



Environmental sign certification

It is an official certification from the Ministry of Environment that is granted to products that keep the indoor space clean by measuring hazardous substances in building materials. BENIF flame-retardant products have obtained environmental sign certification by reducing harmful substances and environmental pollution in daily life, and do not use phthalate plasticizers. However, the stability in contact with food has not been verified, so please use with caution. (Environmental Sign No. 18903, ※ Please check the certificate as there are colors that do not have certification.)

Children's activity space inspection

It is a system that the Ministry of Environment confirms in advance if the product is suitable for spaces where children are mainly active including children's play facilities, kindergartens, elementary schools, and others. BENIF flame retardant products secured an environmental label so can be used with confidence.



European textile product quality certification

It is a certification that verifies about 200 harmful substances for products that come into contact with the skin such as products/bedding/toys/interior materials. It is acceptable for use on children's toys and clothing. BENIF's general monochromatic products obtained the 1st class of this certification(Baby Class) for the first in the industry so can be used in toys and clothing for infants and toddlers under 3 years of age. (Certification No. SE025 164519 TESTEX)

ENVIRONMENT FRIENDLINESS



Environmental Product certification

It is a system to induce environmental improvement by evaluating the environmental impact of the entire process from raw materials to production, distribution, use, and disposal. BENIF Wood products, that obtained the certification, strives to continuously improve the environment. (Environmental Product Certification Label No. 2020-483)



Low carbon product certification

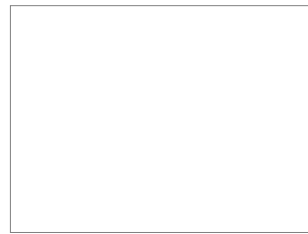
If the carbon footprint value is less than the maximum allowable carbon emission(average value of the carbon emission on the environmental product label of the same kind) or more than the minimum carbon reduction rate, it is certified by the Korea Environmental Industry & Technology Institute. By obtaining this certification, BENIF Solid is widely used as an environmentally friendly product. (Environmental Product Certification Label No. 2019-030)

GLOSS

SOLID



GM001 



GS001 



GS002 



RSH01 (ESH01)



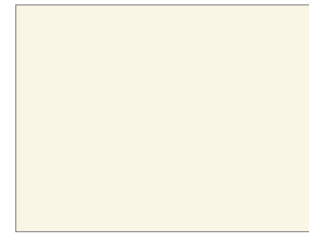
RSH05 (ESH05)



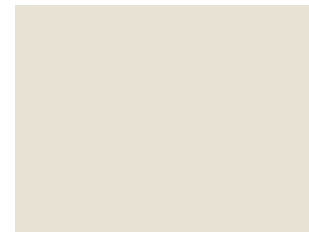
RS130 (ES130) 



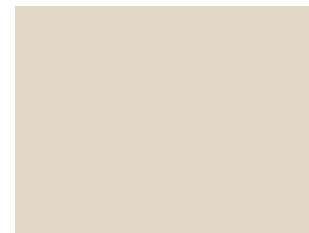
RS69 (ES69) 



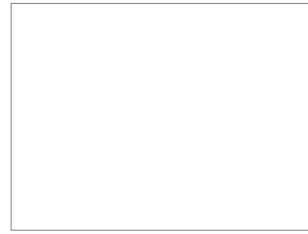
RS70 (ES70) 



RS57 (ES57) 



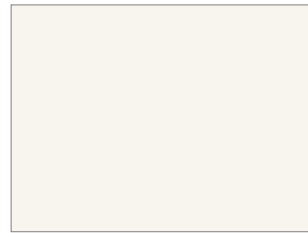
RS92 (ES92)



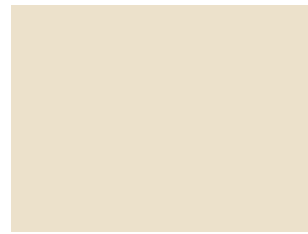
RS86 (ES86) 



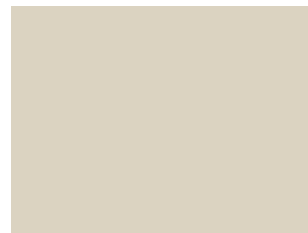
RS171 (ES171) 



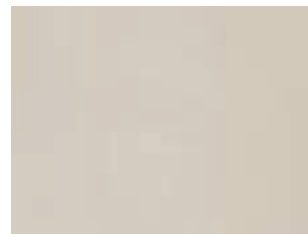
RS71 (ES71) 



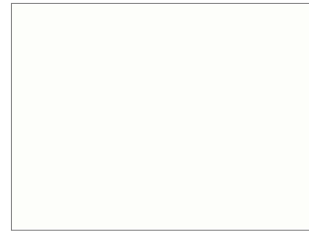
RS49 (ES49)



RS40 (ES40)



RS133 (ES133)



RS124 (ES124) 



RS13 (ES13)



RS131 (ES131)



RS132 (ES132)



RS176 (ES176) 



RS35 (ES35) 



RS164 (ES164) 



RS68 (ES68)



RS91 (ES91) 



RS121 (ES121) 



RS135 (ES135) 



RS56 (ES56) 



RS55 (ES55) 



RS172 (ES172) 



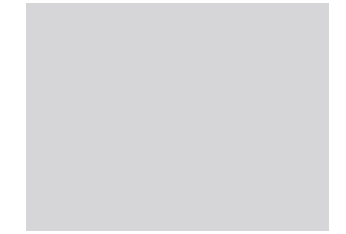
RS134 (ES134) 



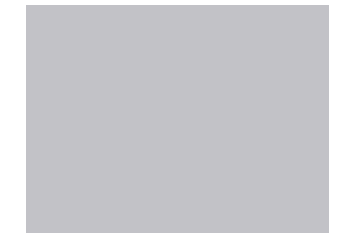
RS52 (ES52) 



RS136 (ES136)



RS118 (ES118)



RS119 (ES119)



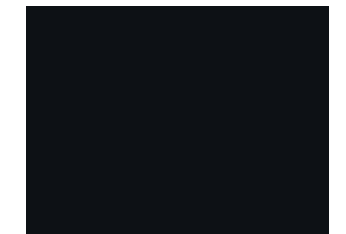
RS125 (ES125)



RS51 (ES51) 



(ES158)



RS22 (ES22) 

SOLID

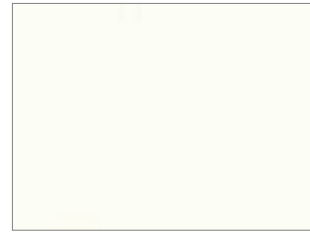
SOLID



SOLID EMOSS



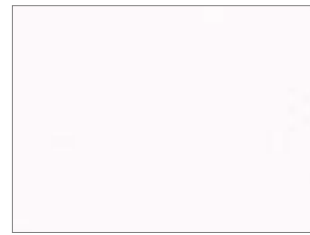
RS174 (ES174) **N**



RS104 (ES104) **BEST**



RS101 (ES101)



RS138 (ES138)



RS160 (ES160) **N**



RS98 (ES98) **BEST**



RS106 (ES106) **BEST**



RS150 (ES150)



RSP01 (ESP01) **BEST**



RS116 (ES116) **BEST**



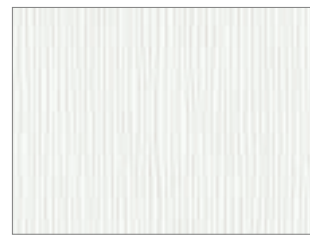
RSJD1 (HSJD1) **BEST**



RS139 (ES139)



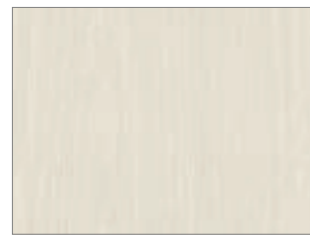
RS140 (ES140)



RS159 (ES159) **N**



RS144 (ES144)



RS107 (ES107) **BEST**



RS145 (ES145)



RS110 (ES110)



RS105 (ES105) **BEST**



※ 컬러의 단위 무늬(반복 무늬)와 확대 이미지를 On-Line에서 만나보세요.
 (On-Line 상의 이미지들은 실제 색상과 다를 수 있으니, 실물을 반드시 확인해보세요.)
 ※ Meet the color unit pattern(repeated) and enlarged images online.
 (Images online may differ from actual colors, please check the actual product.)



신제품
New



비방염 컬러 번호
Non-Flame Retardant



시공 유의
Installation Instructions



시공사례
Reference



RS149 (ES149)



RS161 (ES161) **N**



RS129 (ES129)



RS108 (ES108) **BEST**



RS151 (ES151)



RS170 (ES170) **N**



RS109 (ES109)



RS117 (ES117)



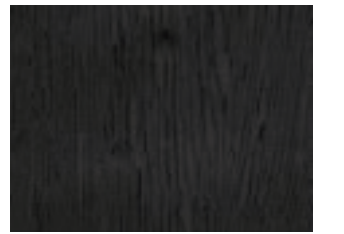
RS141 (ES141)



RS148 (ES148)



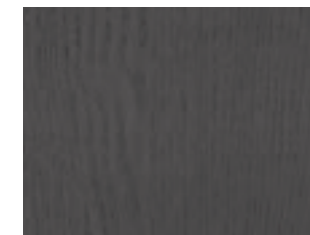
RS173 (ES173) **N**



RSJD2 (HSJD2)



RS142 (ES142)



RS103 (ES103) **BEST**



RS175 (ES175) **N**



RS162 (ES162) **N**



RSP02 (ESP02)

PREMIUM SOLID

은은하게 반사된 나뭇결 위에 다채로운 색으로 온기를 얻습니다.

A variety of colors brings warmth to the subdued reflection of wood grain.



RGM10



※ 컬러의 단위 무늬(반복 무늬)와 확대 이미지를 On-Line에서 만나보세요.
(On-Line 상의 이미지들은 실제 색상과 다를 수 있으니, 실물을 반드시 확인해보세요.)
※ Meet the color unit pattern(repeated) and enlarged images online.
(Images online may differ from actual colors, please check the actual product.)

N
신제품
New

()
비방염 컬러 번호
Non-Flame Retardant

!
시공 유의
Installation Instructions

📖
시공사례
Reference



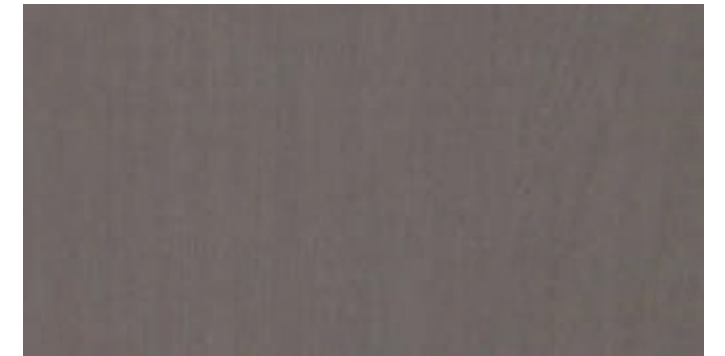
RGM05 (EGM05)



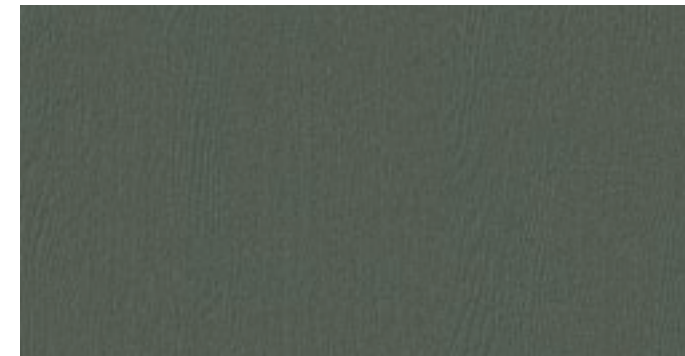
RGM03 (EGM03)



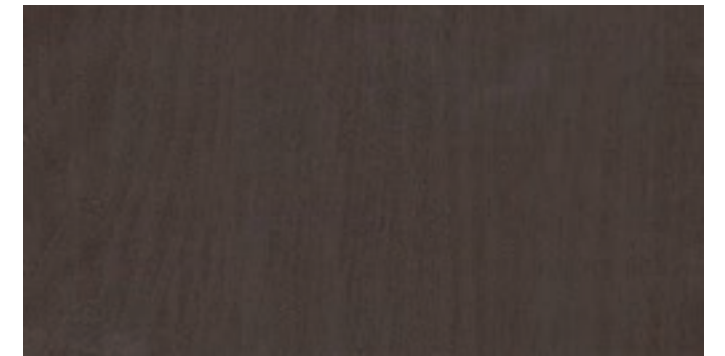
RGM04 (EGM04)



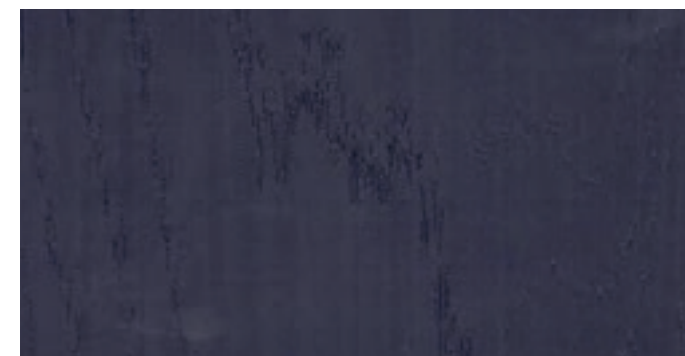
RGM02 (EGM02)



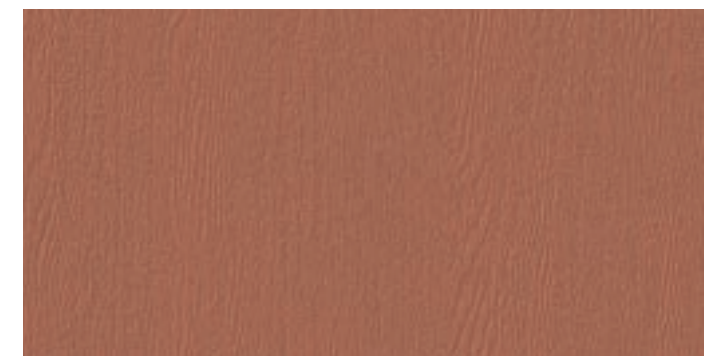
RGM10 (EGM10) **N** **📖**



RGM01 (EGM01)



RGM06 (EGM06)

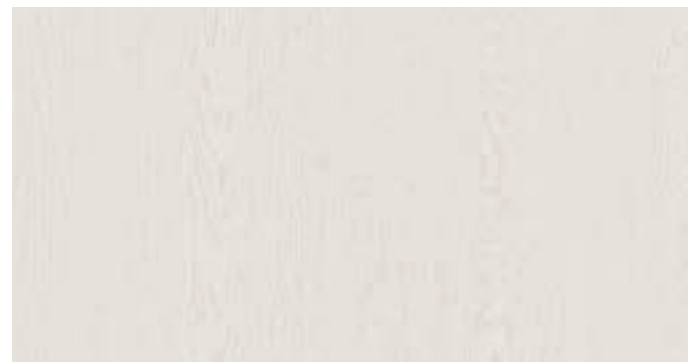


RGM11 (EGM11) **N**

PREMIUM SOLID

네추럴한 표면 위에 화이트 도장을 한 것처럼, 한층 부드럽고 밝은 느낌을 줍니다.

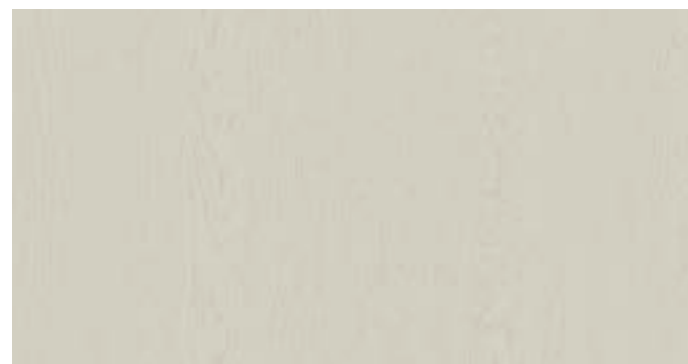
A softer and brighter feeling is conveyed as if it was painted white on a natural surface.



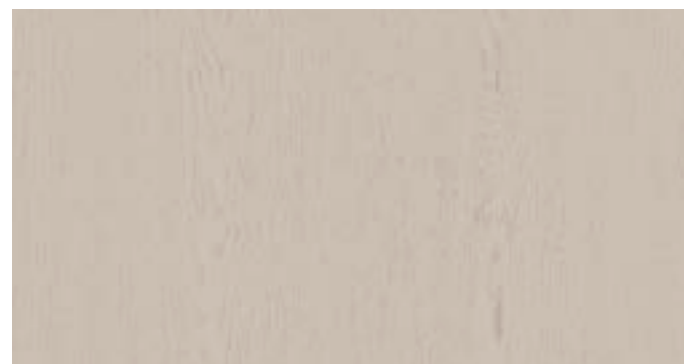
SM001 **N**



SM002 **N**



SM003 **N** **E**



SM004 **N**



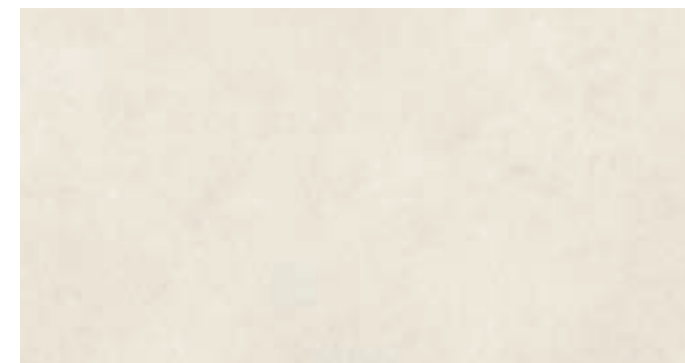
※ 컬러의 단위 무늬(반복 무늬)와 확대 이미지를 On-Line에서 만나보세요.
 (On-Line 상의 이미지들은 실제 색상과 다를 수 있으니, 실물을 반드시 확인해주세요.)
 ※ Meet the color unit pattern(repeated) and enlarged images online.
 (Images online may differ from actual colors, please check the actual product.)

N
 신제품
 New

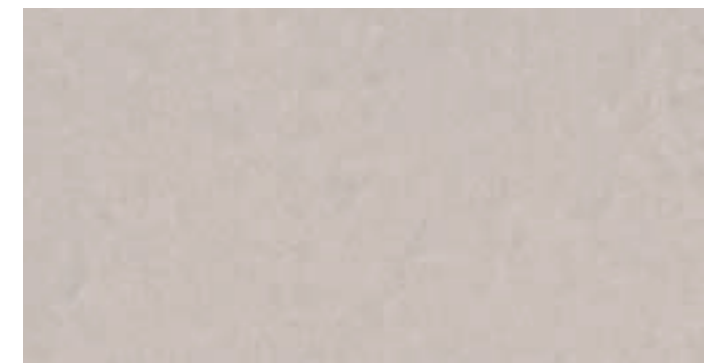
()
 비방염 컬러 번호
 Non-Flame Retardant

!
 시공 유의
 Installation Instructions

E
 시공사례
 Reference



SM005 **N** **E**



SM006 **N**



SM008 **N**



SM007 **N**



SOLID FABRIC

파스텔 색감과 섬세한 직물 표면이 어우러져 따뜻하고 포근한 느낌으로 다가옵니다.
Pastel colors and delicate fabric surfaces in harmony create a warm and cozy feeling.



SF003 **N**



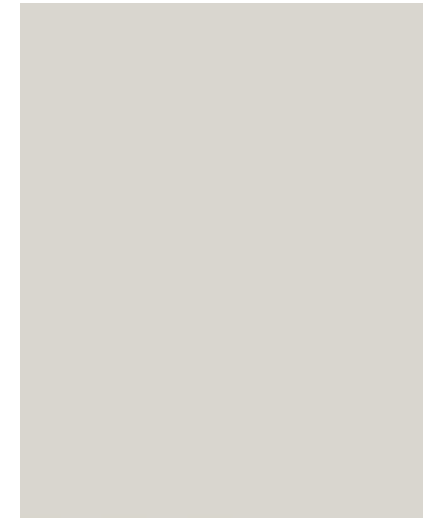
※ 컬러의 단위 무늬(반복 무늬)와 확대 이미지를 On-Line에서 만나보세요.
(On-Line 상의 이미지들은 실제 색상과 다를 수 있으니, 실물을 반드시 확인해보세요.)
※ Meet the color unit pattern(repeated) and enlarged images online.
(Images online may differ from actual colors, please check the actual product.)

N
신제품
New

()
비방염 컬러 번호
Non-Flame Retardant

!
시공 유의
Installation Instructions

📖
시공사례
Reference



SF009 **N**



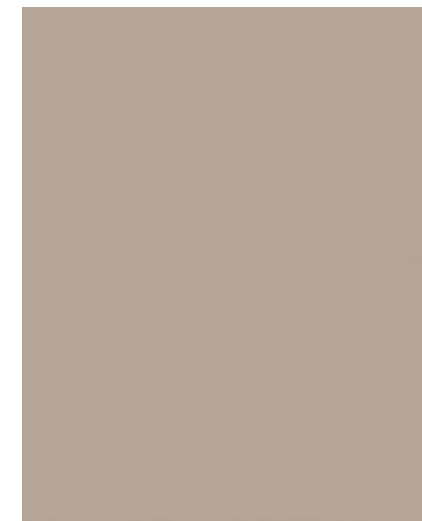
SF008 **N**



SF006 **N**



SF002 **N**



SF005 **N**



SF010 **N**



SF004 **N**



SF001 **N**



SF007 **N**

METAL

화려하게 비춰지는 메탈은 세련이 돋보이는 럭셔리한 공간을 만듭니다.

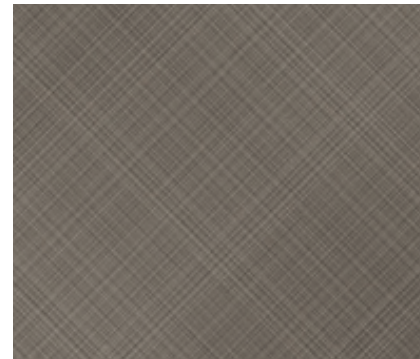
The brilliantly illuminating metal creates an outstanding refined luxurious space.



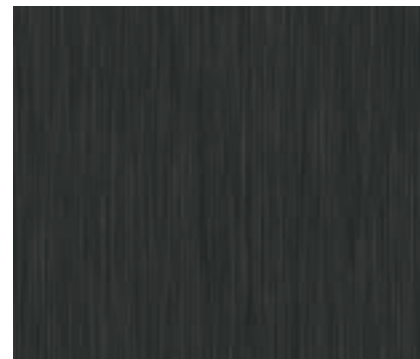
PM008



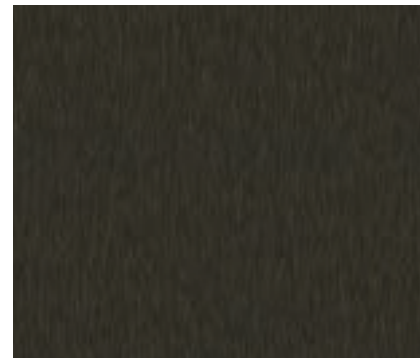
PM001 **N**



PM008 **N** **☞**



PM003 **N**



PM005 **N**



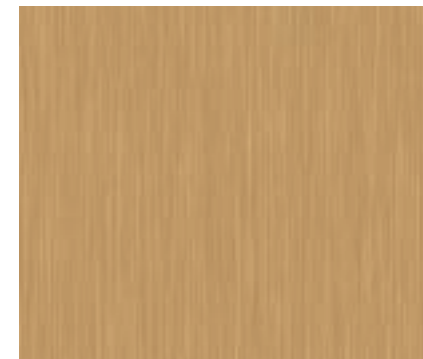
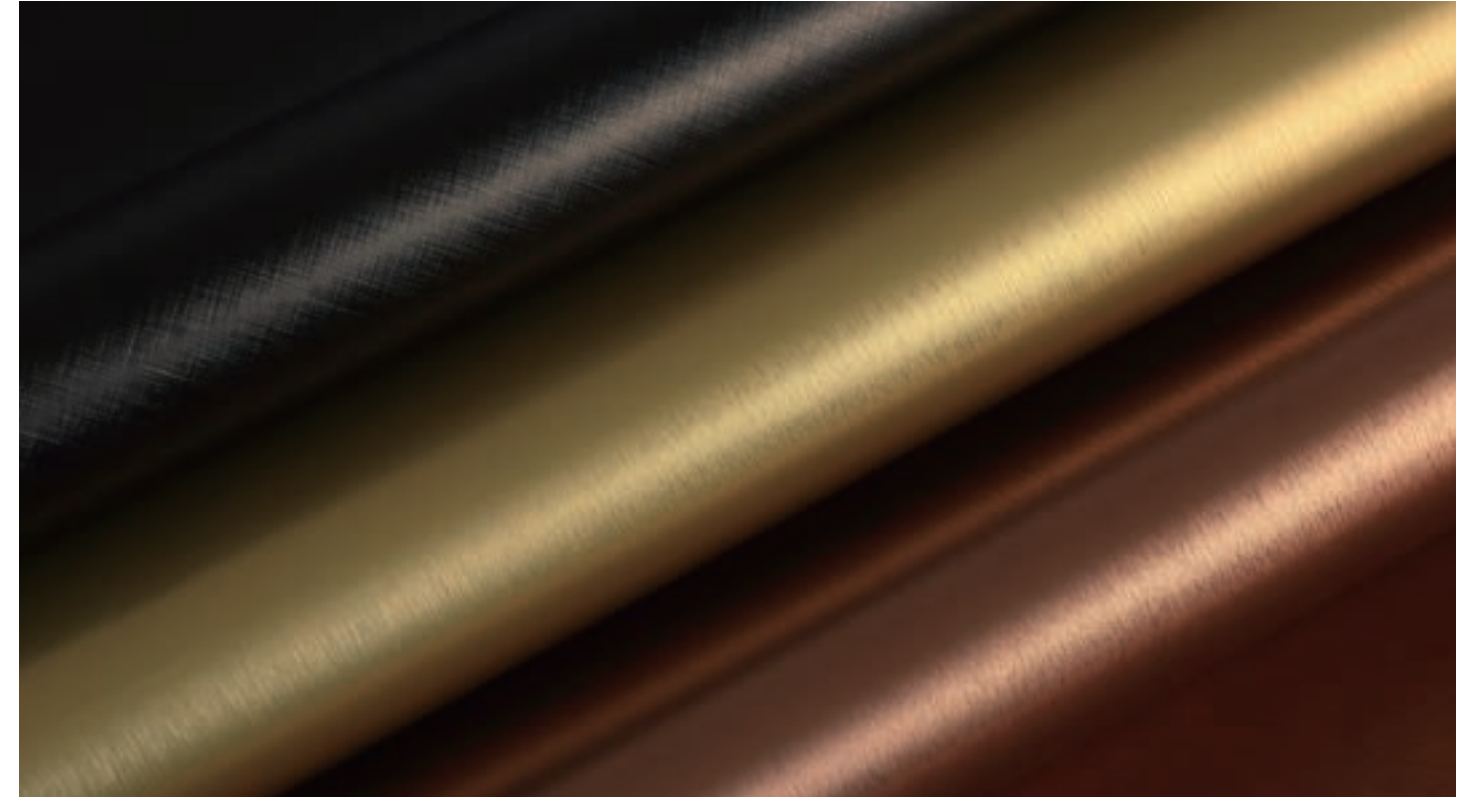
※ 컬러의 단위 무늬(반복 무늬)와 확대 이미지들을 On-Line에서 만나보세요.
(On-Line 상의 이미지들은 실제 색상과 다를 수 있으니, 실물을 반드시 확인해주세요.)
※ Meet the color unit pattern(repeated) and enlarged images online.
(Images online may differ from actual colors, please check the actual product.)

N
신제품
New

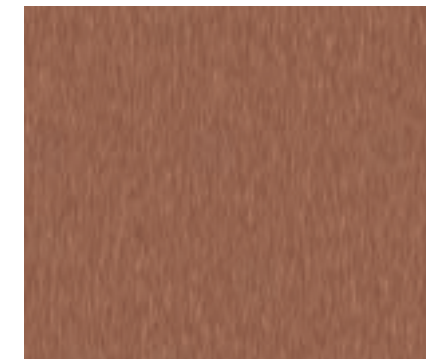
()
비방염 컬러 번호
Non-Flame Retardant

!
시공 유의
Installation Instructions

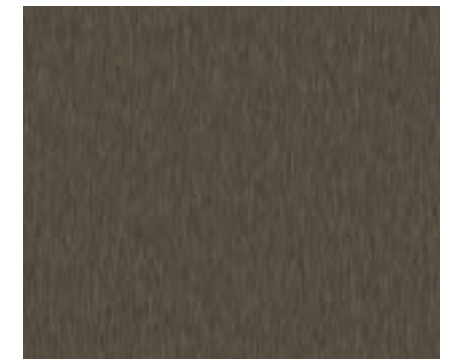
☞
시공사례
Reference



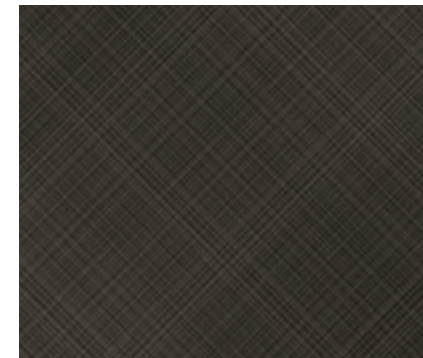
PM002 **N**



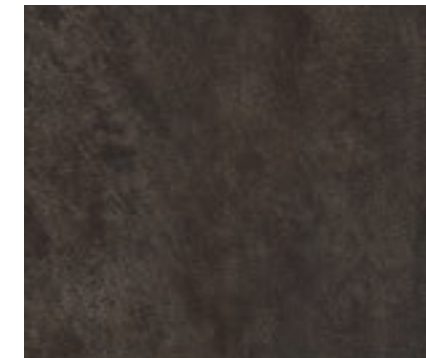
PM004 **N**



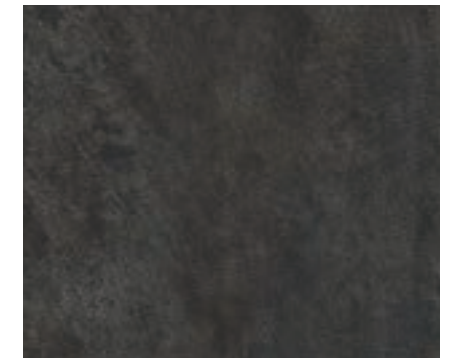
PM006 **N**



PM007 **N**

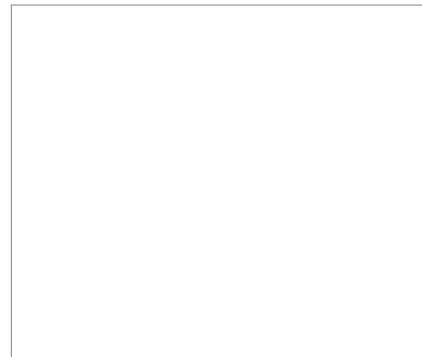


PM009 **N**



PM010 **N**

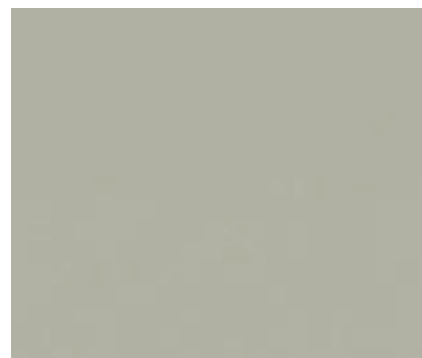
METAL



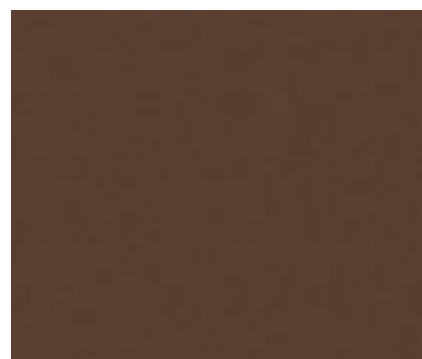
MS21



MS09



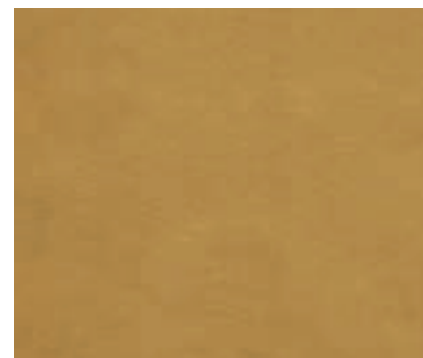
MS18



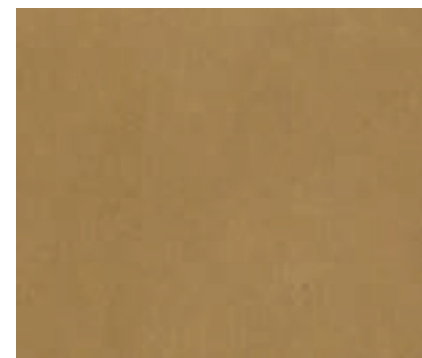
RP52



RP52



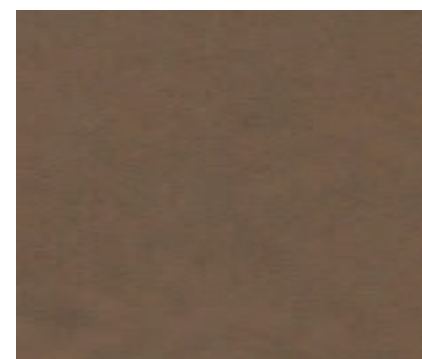
RP48



RP06



RP45 BEST



RP47



※ 컬러의 단위 무늬(반복 무늬)와 확대 이미지들을 On-Line에서 만나보세요.
 (On-Line 상의 이미지들은 실제 색상과 다를 수 있으니, 실물을 반드시 확인해보세요.)
 ※ Meet the color unit pattern(repeated) and enlarged images online.
 (Images online may differ from actual colors, please check the actual product.)



신제품
New



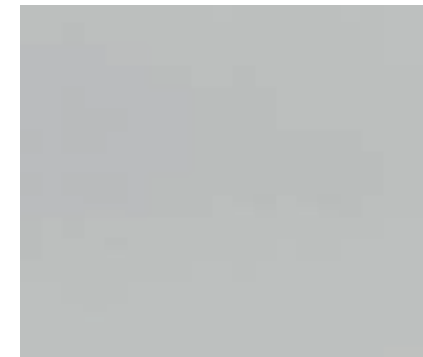
비방염 컬러 번호
Non-Flame Retardant



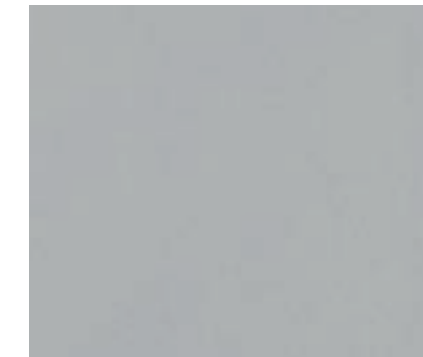
시공 유의
Installation Instructions



시공사례
Reference



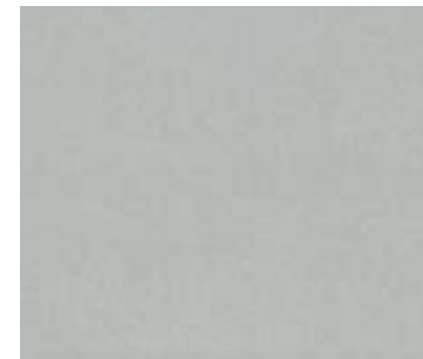
RP04



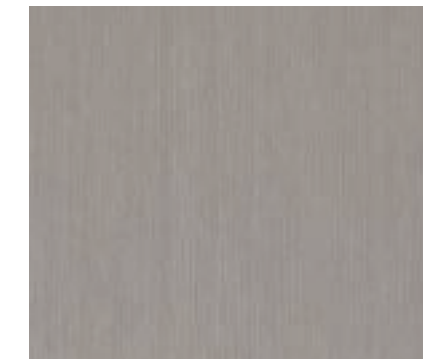
MS01



MS19



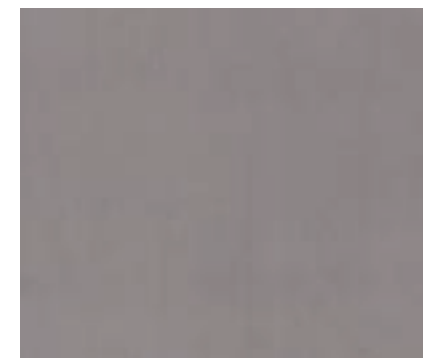
RP08



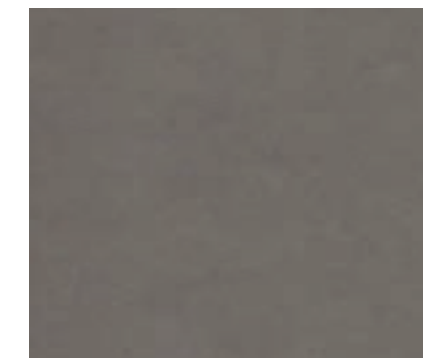
RP42 BEST



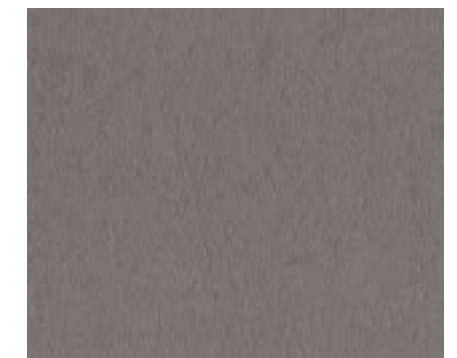
RP03



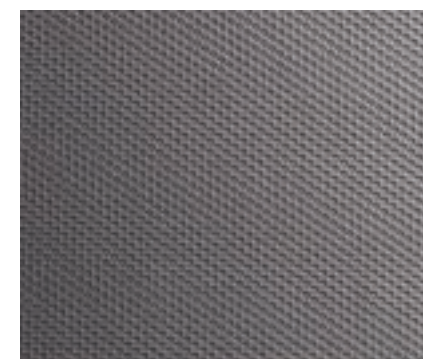
MS20



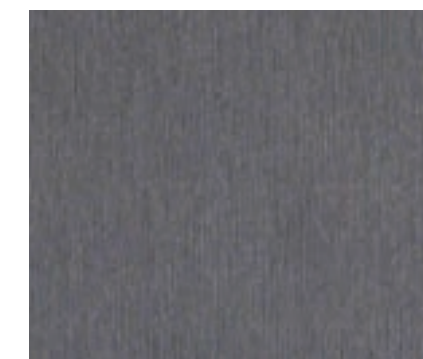
RP46 BEST



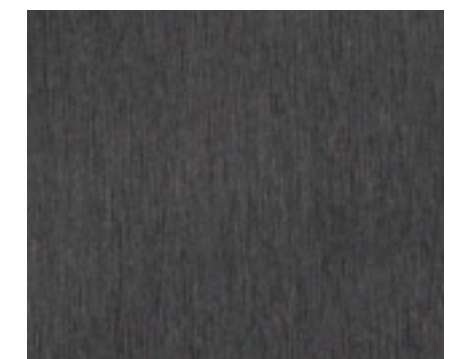
RP49



RP53



RP50



RP51 BEST

CLASSIC WOOD

나무보다 더 나무답게, 나뭇결의 부드러운 숨결을 공간에 담습니다.

More like a tree than a real tree, it contains the soft breath of wood in the space.



PW131



※ 컬러의 단위 무늬(반복 무늬)와 확대 이미지를 On-Line에서 만나보세요.
 (On-Line 상의 이미지들은 실제 색상과 다를 수 있으니, 실물을 반드시 확인해주세요.)
 ※ Meet the color unit pattern(repeated) and enlarged images online.
 (Images online may differ from actual colors, please check the actual product.)



신제품
New



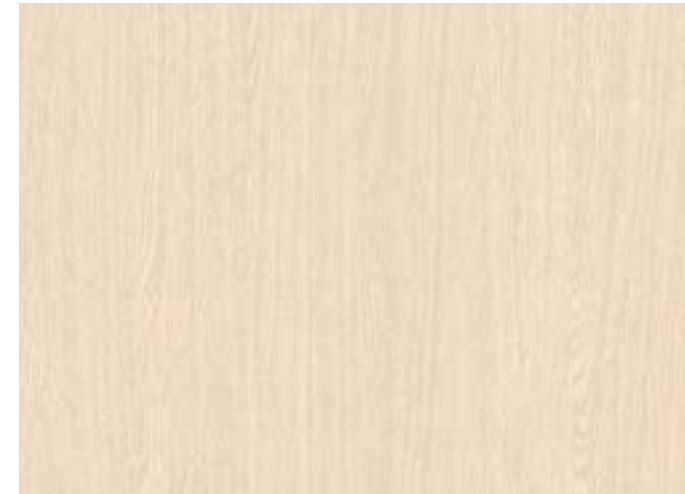
비방염 컬러 번호
Non-Flame Retardant



시공 유의
Installation Instructions

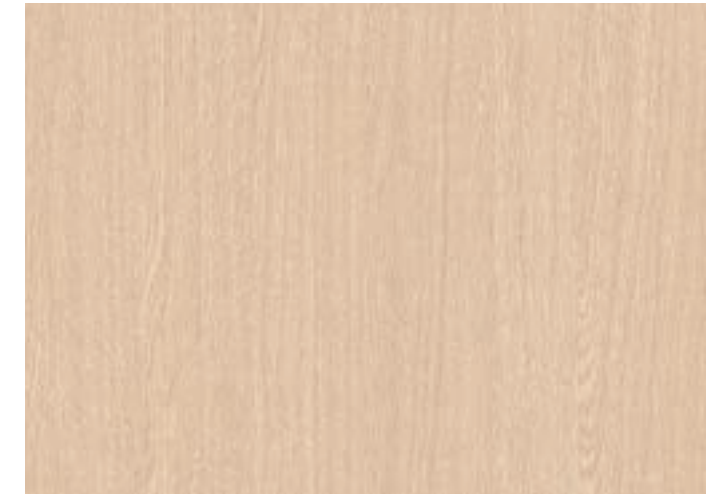


시공사례
Reference



PW126 **N**

AIGUILLE OAK



PW129 **N**

AIGUILLE OAK



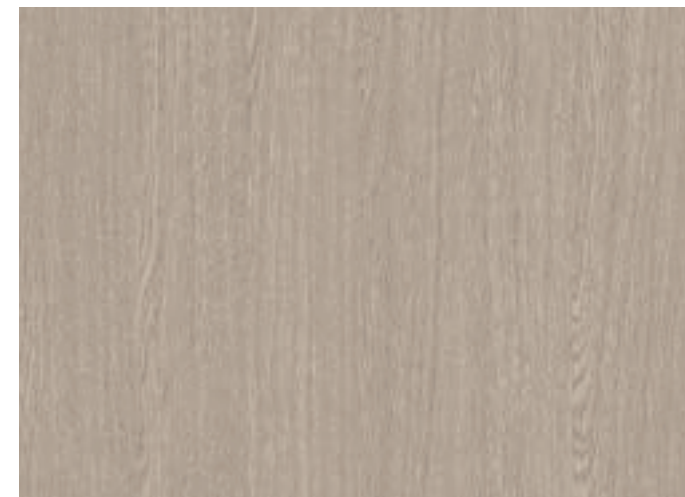
PW127 **N**

AIGUILLE OAK



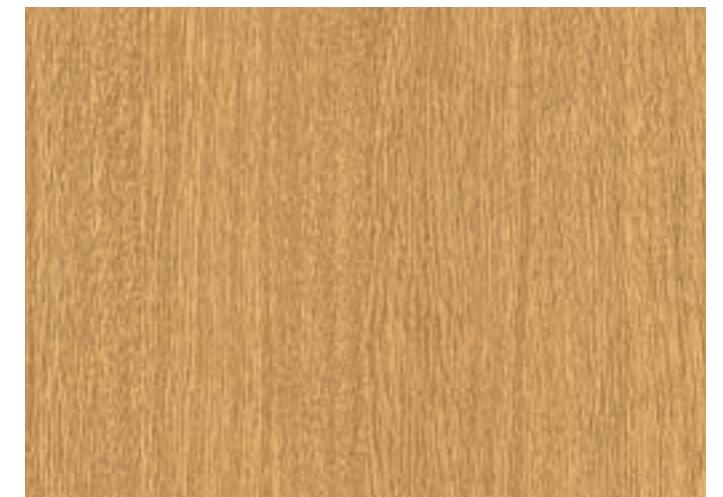
PW130 **N**

AIGUILLE OAK



PW128 **N**

AIGUILLE OAK



PW131 **N**

AIGUILLE OAK

CLASSIC WOOD



PW124



※ 컬러의 단위 무늬(반복 무늬)와 확대 이미지들을 On-Line에서 만나보세요.
 (On-Line 상의 이미지들은 실제 색상과 다를 수 있으니, 실물을 반드시 확인해보세요.)
 ※ Meet the color unit pattern(repeated) and enlarged images online.
 (Images online may differ from actual colors, please check the actual product.)

N
 신제품
 New

()
 비방염 컬러 번호
 Non-Flame Retardant

!
 시공 유의
 Installation Instructions

📖
 시공사례
 Reference



PW138 **N**

OLIVE ASH



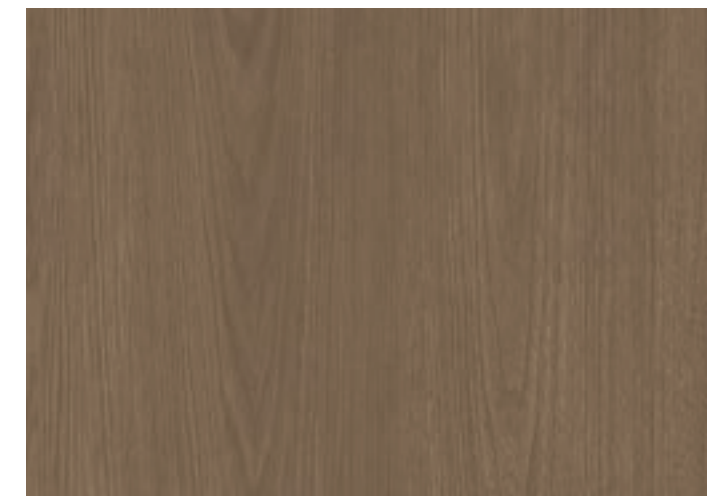
PW123 **N**

WALNUT



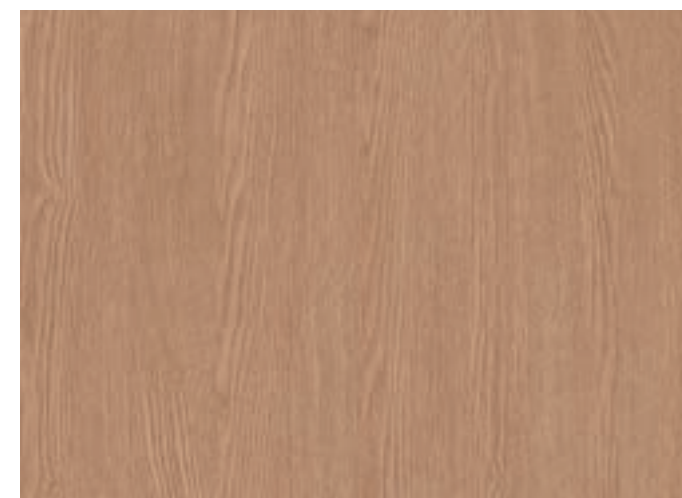
PW139 **N**

OLIVE ASH



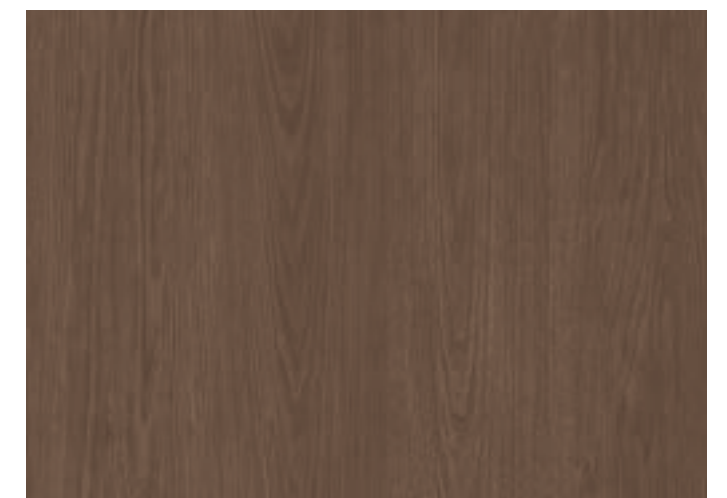
PW124 **N** **📖**

WALNUT



PW140 **N**

OLIVE ASH



PW125 **N**

WALNUT

CLASSIC WOOD



PW132



※ 컬러의 단위 무늬(반복 무늬)와 확대 이미지를 On-Line에서 만나보세요.
 (On-Line 상의 이미지들은 실제 색상과 다를 수 있으니, 실물을 반드시 확인해보세요.)
 ※ Meet the color unit pattern(repeated) and enlarged images online.
 (Images online may differ from actual colors, please check the actual product.)

N
 신제품
 New

()
 비방염 컬러 번호
 Non-Flame Retardant

!
 시공 유의
 Installation Instructions

📖
 시공사례
 Reference



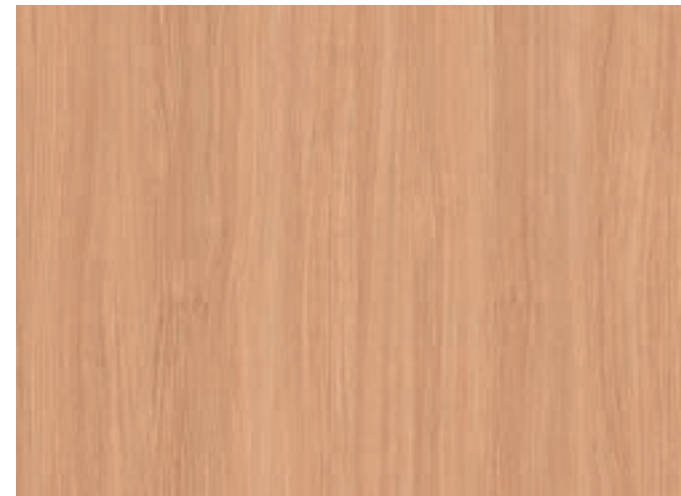
PW137 **N**

EICHE



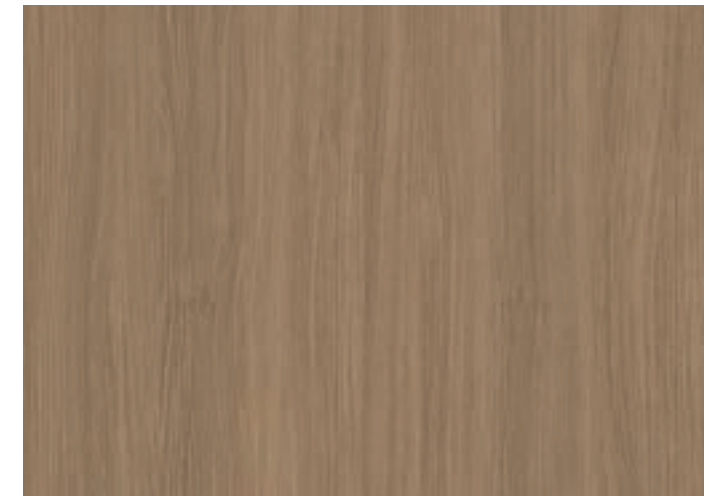
PW136 **N**

EICHE



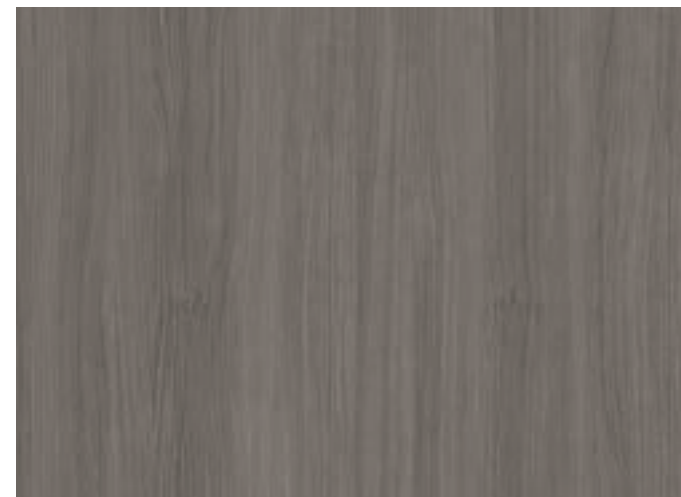
PW133 **N**

DANISH TEAK



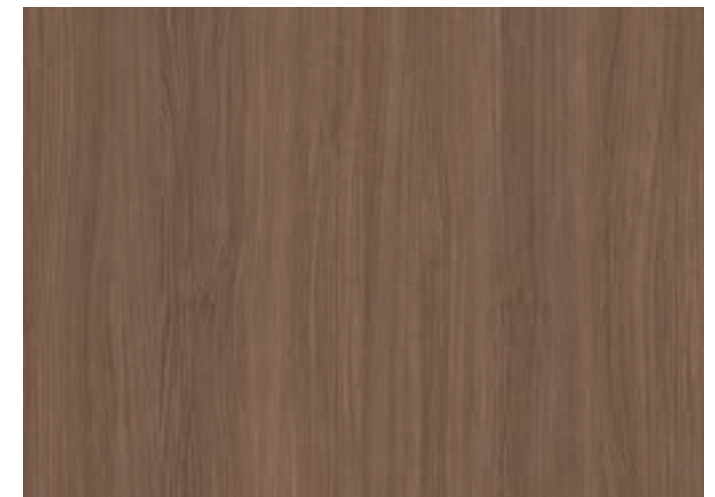
PW132 **N** **📖**

DANISH TEAK



PW135 **N**

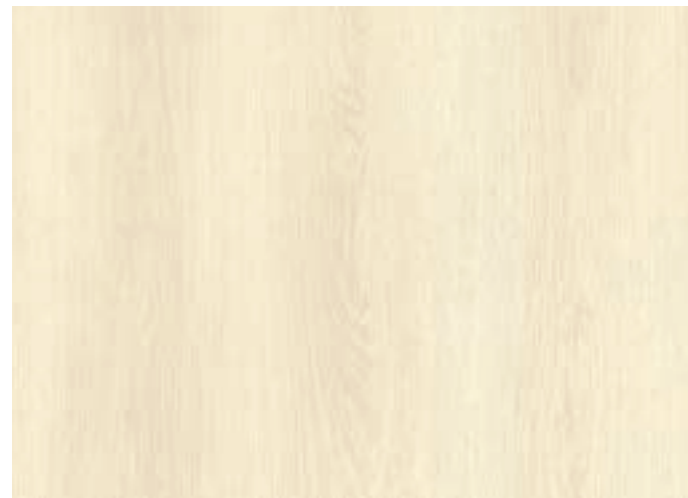
DANISH TEAK



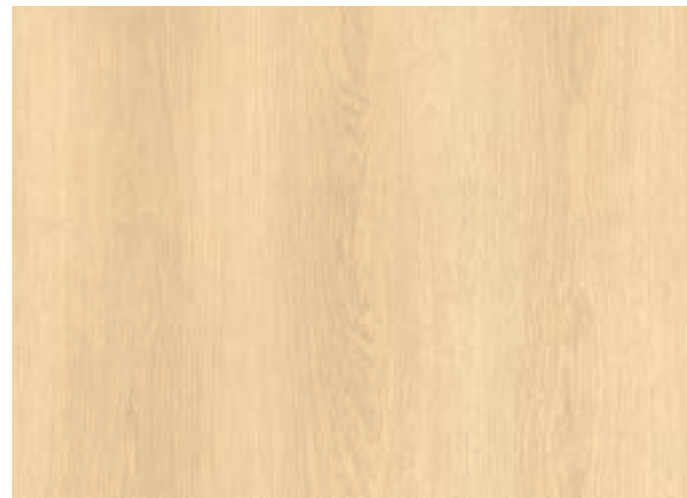
PW134 **N**

DANISH TEAK

CLASSIC WOOD



PW116 STANDARD OAK



PW117 STANDARD OAK



PW111 ASH



PW109 ASH



PW112 ASH



PW120 STANDARD OAK



※ 컬러의 단위 무늬(반복 무늬)와 확대 이미지를 On-Line에서 만나보세요.
 (On-Line 상의 이미지들은 실제 색상과 다를 수 있으니, 실물을 반드시 확인해보세요.)
 ※ Meet the color unit pattern(repeated) and enlarged images online.
 (Images online may differ from actual colors, please check the actual product.)



신제품
New



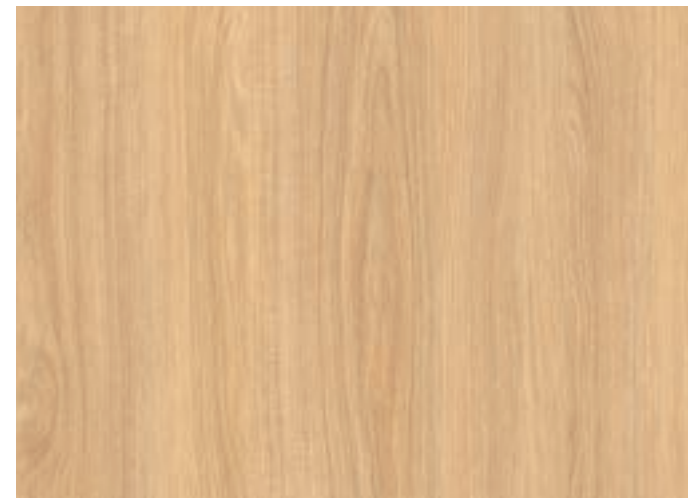
비방염 컬러 번호
Non-Flame Retardant



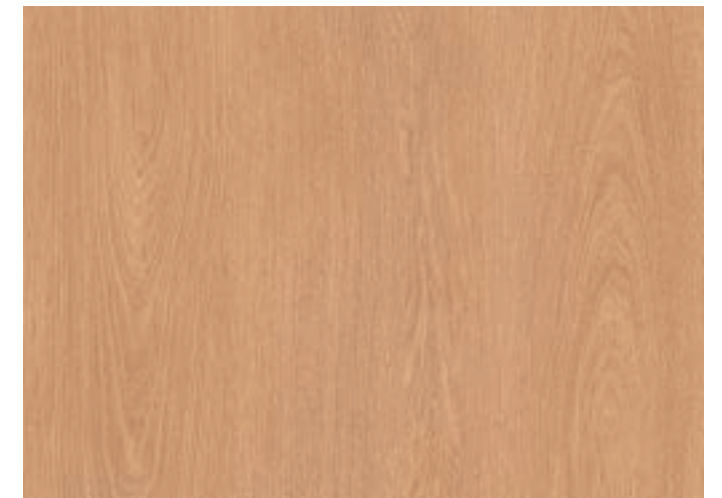
시공 유의
Installation Instructions



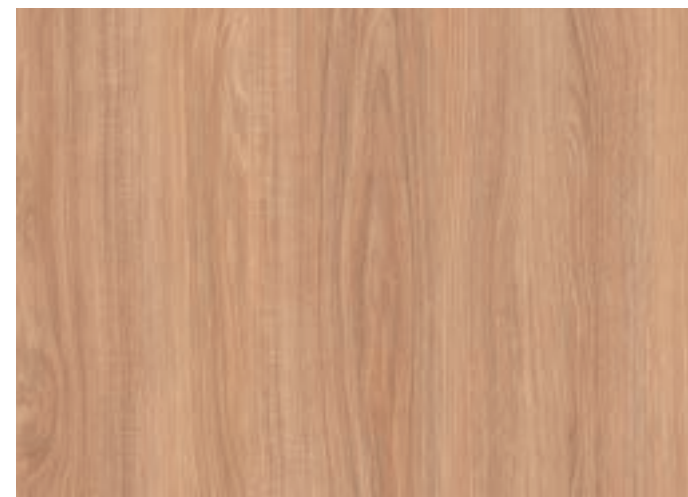
시공사례
Reference



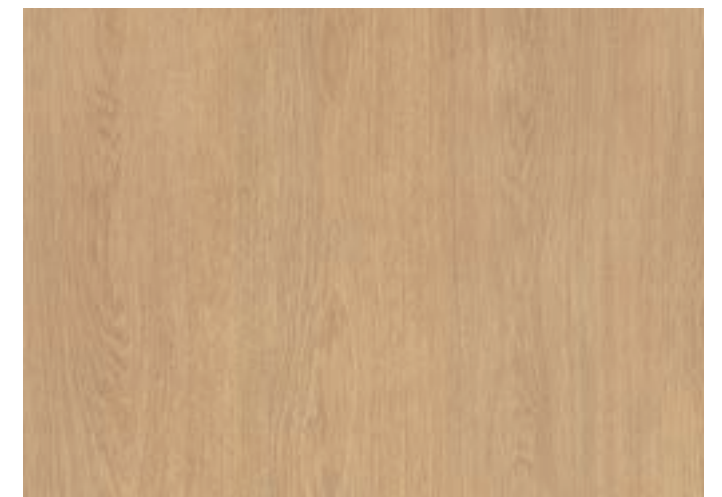
PW105 TEAK



PW110 ASH



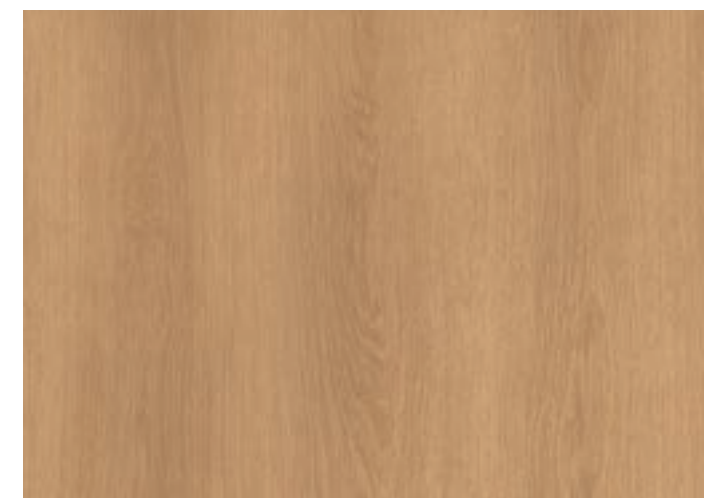
PW106 TEAK



PW118 STANDARD OAK

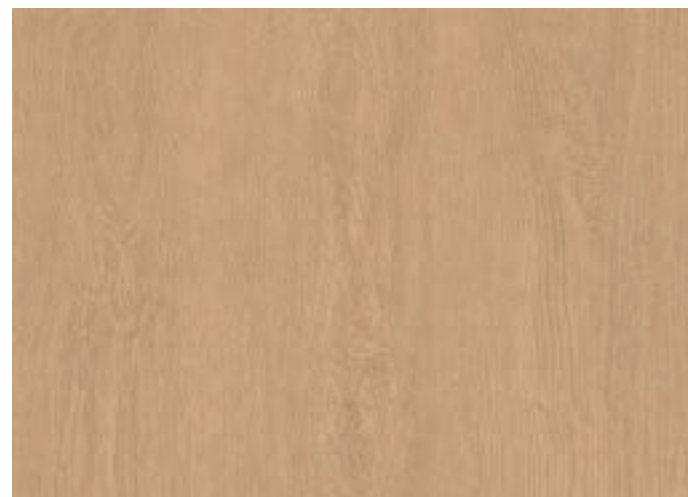


PW113 SLAP OAK



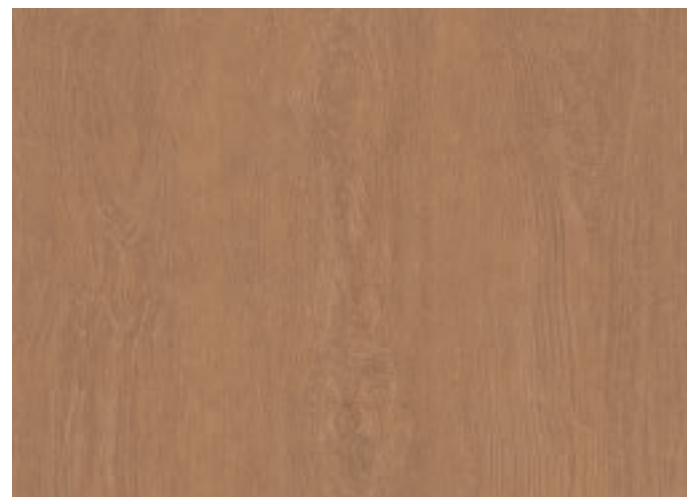
PW119 STANDARD OAK

CLASSIC WOOD



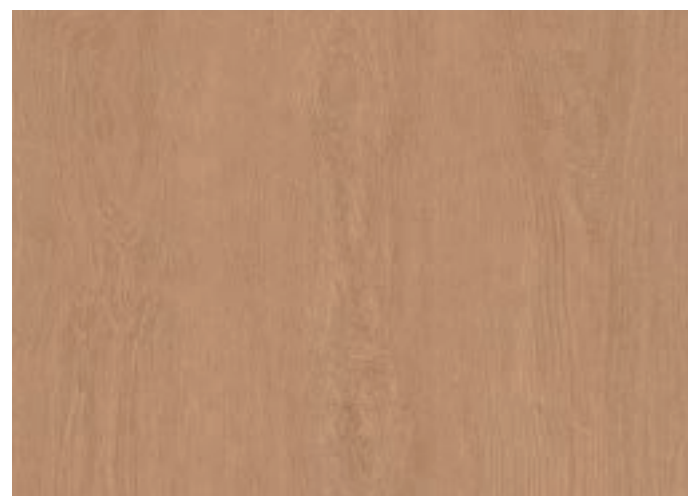
PW101

OAK



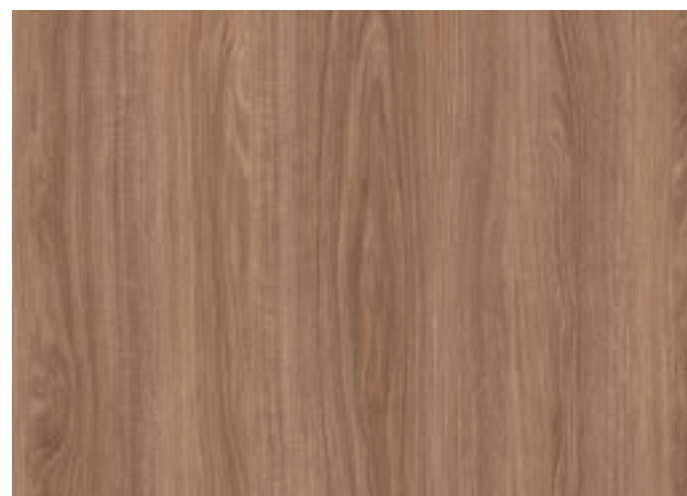
PW103

OAK



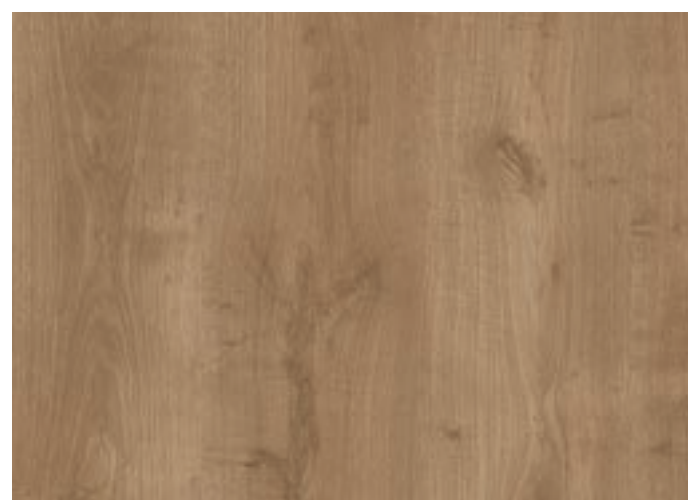
PW102

OAK



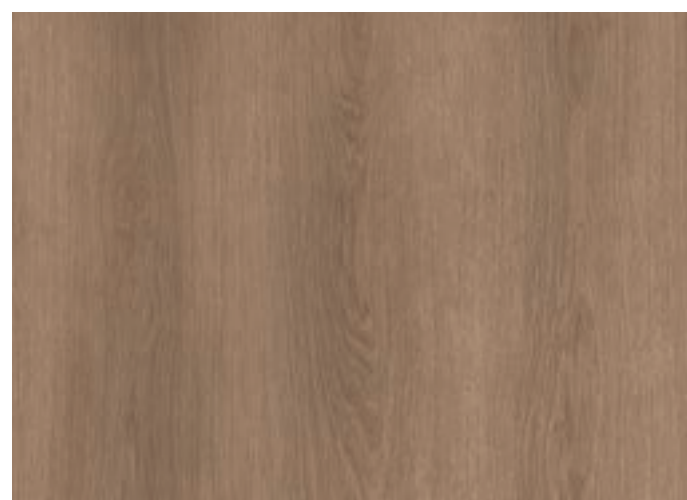
PW107

TEAK



PW114

SLAP OAK



PW121

STANDARD OAK



※ 컬러의 단위 무늬(반복 무늬)와 확대 이미지를 On-Line에서 만나보세요.
 (On-Line 상의 이미지들은 실제 색상과 다를 수 있으니, 실물을 반드시 확인해보세요.)
 ※ Meet the color unit pattern(repeated) and enlarged images online.
 (Images online may differ from actual colors, please check the actual product.)



신제품
New



비방염 컬러 번호
Non-Flame Retardant



시공 유의
Installation Instructions

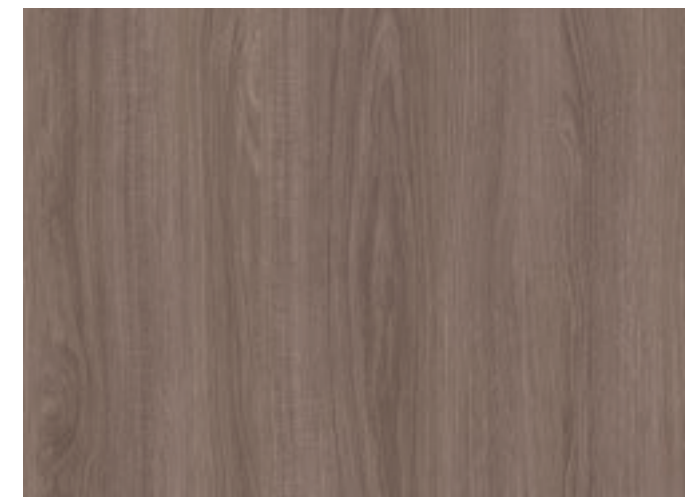


시공사례
Reference



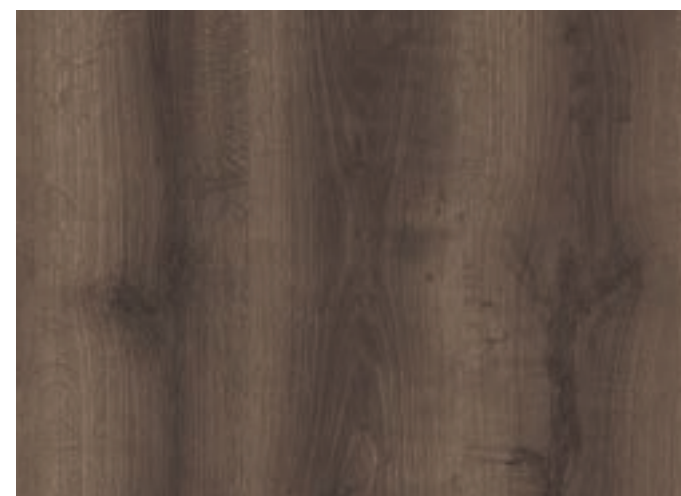
PW104

OAK



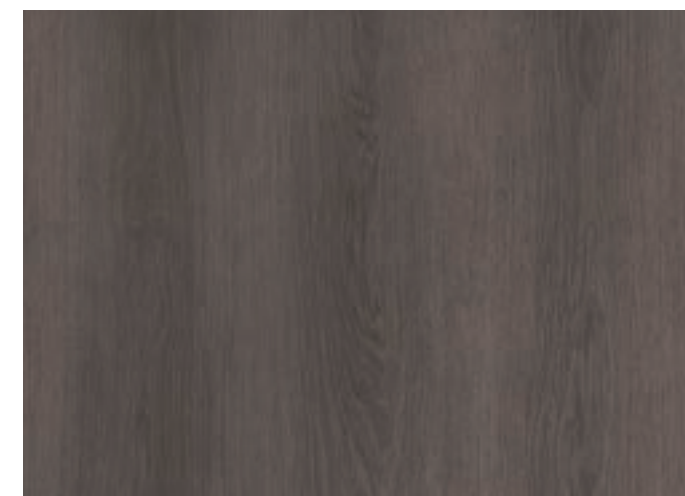
PW108

TEAK



PW115

SLAP OAK



PW122

STANDARD OAK

BIG WOOD

우드 슬랩의 커다랗고 웅장한 나이테와 길게 뻗은 나뭇결의 숨결을 느껴보세요.

Feel the large and magnificent growth rings of the wood slab and the breath of the long grain of wood.



BW009



※ 컬러의 단위 무늬(반복 무늬)와 확대 이미지들을 On-Line에서 만나보세요.
 (On-Line 상의 이미지들은 실제 색상과 다를 수 있으니, 실물을 반드시 확인해보세요.)
 ※ Meet the color unit pattern(repeated) and enlarged images online.
 (Images online may differ from actual colors, please check the actual product.)

N
 신제품
 New

()
 비방염 컬러 번호
 Non-Flame Retardant

!
 시공 유의
 Installation Instructions

📷
 시공사례
 Reference



BW009 **N** **📷**

ANTIQUÉ OAK



BW007 **N**

ANTIQUÉ OAK



BW008 **N**

ANTIQUÉ OAK

BIG WOOD



BW012



※ 컬러의 단위 무늬(반복 무늬)와 확대 이미지들을 On-Line에서 만나보세요.
 (On-Line 상의 이미지들은 실제 색상과 다를 수 있으니, 실물을 반드시 확인해보세요.)
 ※ Meet the color unit pattern(repeated) and enlarged images online.
 (Images online may differ from actual colors, please check the actual product.)

- N
 신제품
 New
- ()
 비방염 컬러 번호
 Non-Flame Retardant
- !
 시공 유의
 Installation Instructions
- @
 시공사례
 Reference



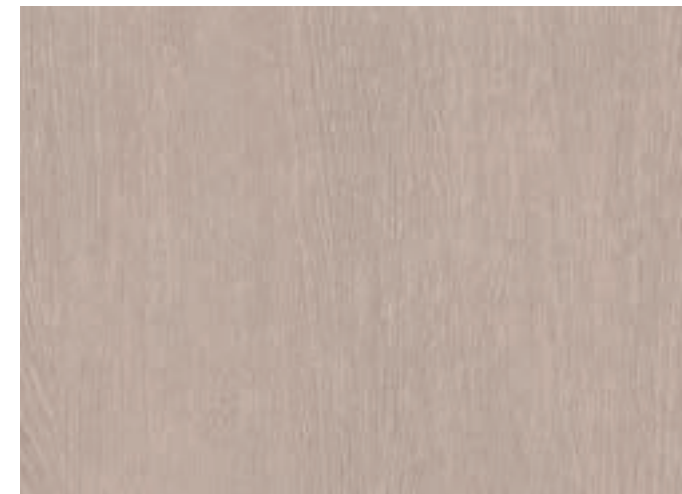
BW010 N

LAUAN



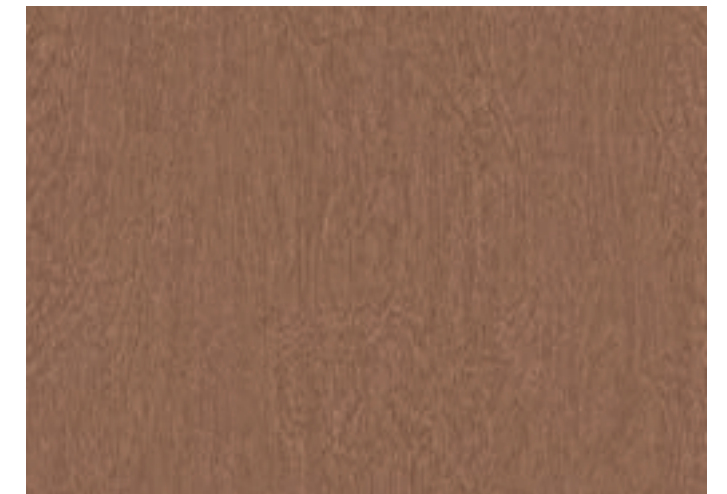
BW013 N

LAUAN



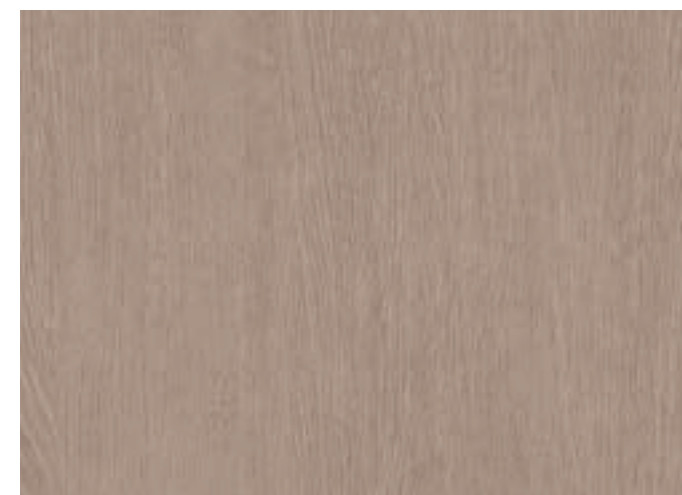
BW014 N

WASHED ASH



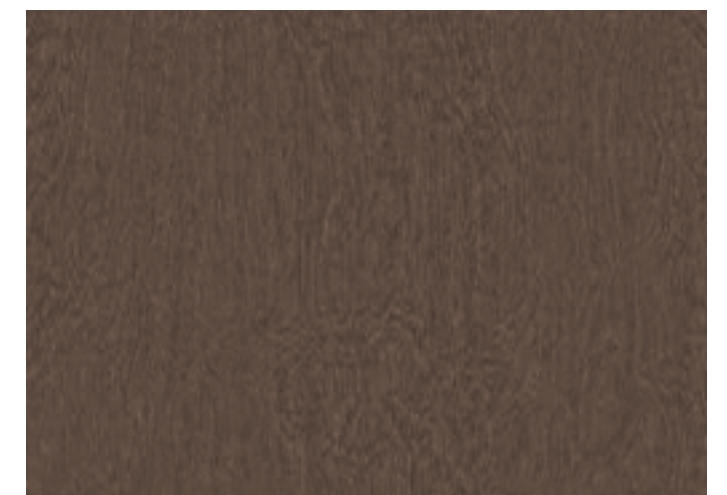
BW011 N

LAUAN



BW015 N

WASHED ASH



BW012 N @

LAUAN

BIG WOOD



BW002 | LX지인 인테리어 지인스퀘어 강남



BW002 | LX지인 인테리어 지인스퀘어 강남



※ 컬러의 단위 무늬(반복 무늬)와 확대 이미지를 On-Line에서 만나보세요.
 (On-Line 상의 이미지들은 실제 색상과 다를 수 있으니, 실물을 반드시 확인해보세요.)
 ※ Meet the color unit pattern(repeated) and enlarged images online.
 (Images online may differ from actual colors, please check the actual product.)

N
 신제품
 New

()
 비방염 컬러 번호
 Non-Flame Retardant

!
 시공 유의
 Installation Instructions

📖
 시공사례
 Reference



BW001

ASH



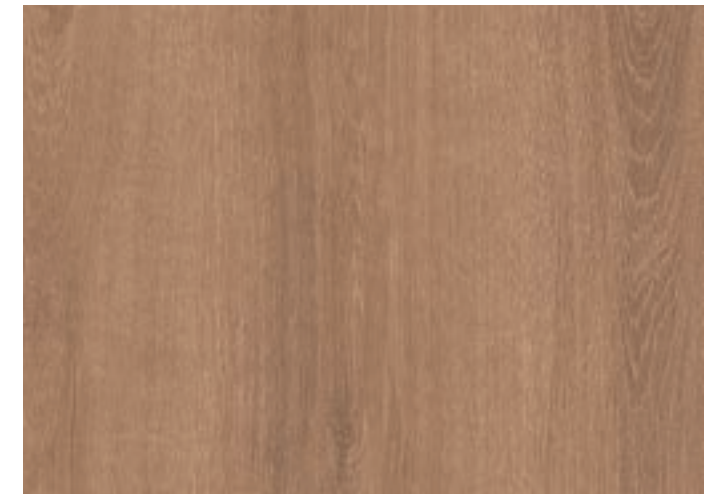
BW005

OAK



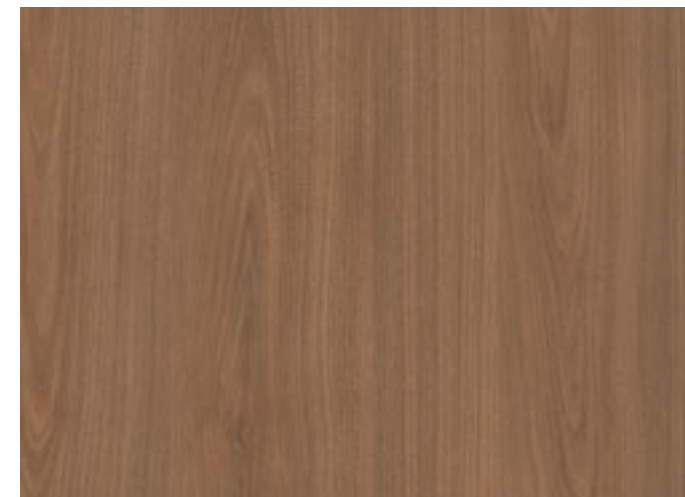
BW006 **BEST**

OAK



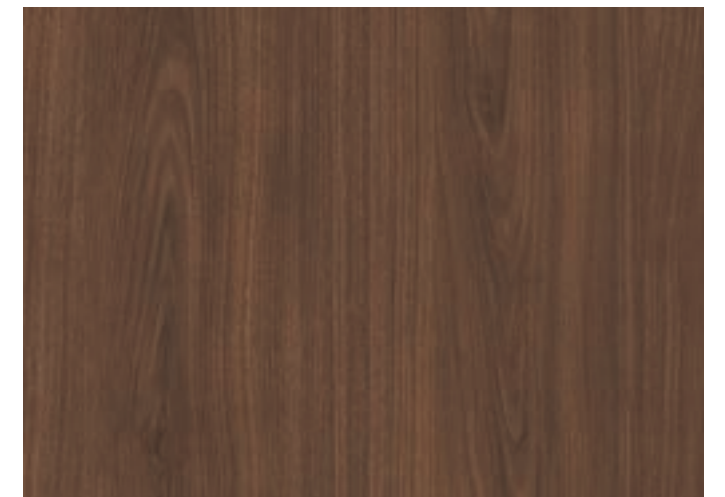
BW004

OAK



BW002 **BEST** **📖**

WALNUT



BW003 **BEST**

WALNUT

PREMIUM WOOD

깊이있는 나뭇결의 자연스러움을 있는 그대로 리얼하게 담아갑니다.
It realistically conveys the naturalness of the deep grain of wood.



NW116



NW111 (NE111) ASH



NW053 (NE053) TEAK



NW080 (NE080) CASTAGNO CARDDUCI



NW102 (NE102) OAK



NW116 (NE116)   BRUSHED OAK



※ 컬러의 단위 무늬(반복 무늬)와 확대 이미지들을 On-Line에서 만나보세요.
(On-Line 상의 이미지들은 실제 색상과 다를 수 있으니, 실물을 반드시 확인해주세요.)
※ Meet the color unit pattern(repeated) and enlarged images online.
(Images online may differ from actual colors, please check the actual product.)



신제품
New



비방염 컬러 번호
Non-Flame Retardant



시공 유의
Installation Instructions



시공사례
Reference



NW120



NW110 (NE110) TEAK



NW114 (NE114) ASH



NW099 (NE099) WALNUT



NW120 (NE120)   WASHED OAK



NW041 (NE041) WHITE OAK

PREMIUM WOOD



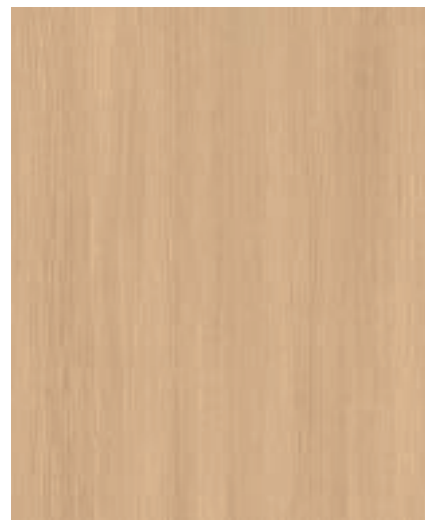
NW109



NW082 (NE082) OAK



NW113 (NE113) ASH



NW100 (NE100) **BEST** WALNUT



NW083 (NE083) **BEST** OAK



NW092 (NE092) LINE TEAK



※ 컬러의 단위 무늬(반복 무늬)와 확대 이미지들을 On-Line에서 만나보세요.
 (On-Line 상의 이미지들은 실제 색상과 다를 수 있으니, 실물을 반드시 확인해보세요.)
 ※ Meet the color unit pattern(repeated) and enlarged images online.
 (Images online may differ from actual colors, please check the actual product.)



신제품
New



비방염 컬러 번호
Non-Flame Retardant



시공 유의
Installation Instructions



시공사례
Reference



NW101 | tvN 드라마 '산후조리원' 원장실



NW086 (NE086) OAK



NW101 (NE101) **NEW** WALNUT



NW109 (NE109) **NEW** TEAK



NW089 (NE089) TEAK



NW084 (NE084) OAK

PREMIUM WOOD



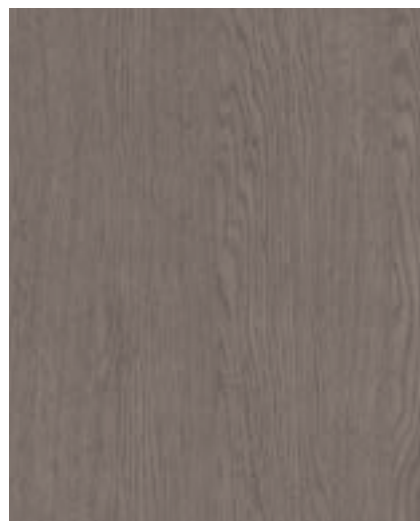
NW122



NW122 (NE122) WASHED OAK



NW119 (NE119) BRUSHED OAK



NW123 (NE123) WASHED OAK



NW015 (NE015) OAK



NW118 (NE118) BRUSHED OAK



※ 컬러의 단위 무늬(반복 무늬)와 확대 이미지를 On-Line에서 만나보세요.
 (On-Line 상의 이미지들은 실제 색상과 다를 수 있으니, 실물을 반드시 확인해보세요.)
 ※ Meet the color unit pattern(repeated) and enlarged images online.
 (Images online may differ from actual colors, please check the actual product.)



신제품
New



비방염 컬러 번호
Non-Flame Retardant



시공 유의
Installation Instructions



시공사례
Reference



NW117



NW121 (NE121) WASHED OAK



NW117 (NE117) BRUSHED OAK



NW068 (NE068) PADOUK



NW056 (NE056) TEAK



NW017 (NE017) OAK

PREMIUM WOOD



NW112 (NE112) ASH



NW073 (NE073) BIRCH



NW032 (NE032) OAK



NW071 (NE071) MAPLE



NW085 (NE085) OAK



※ 컬러의 단위 무늬(반복 무늬)와 확대 이미지를 On-Line에서 만나보세요.
(On-Line 상의 이미지들은 실제 색상과 다를 수 있으니, 실물을 반드시 확인해보세요.)
※ Meet the color unit pattern(repeated) and enlarged images online.
(Images online may differ from actual colors, please check the actual product.)



신제품
New



비방염 컬러 번호
Non-Flame Retardant



시공 유의
Installation Instructions



시공사례
Reference



NW057 (NE057) OAK



NW078 (NE078) TEAK



NW038 (NE038) ASH



NW014 (NE014) OAK



NW033 (NE033) OAK

PREMIUM WOOD



NW062 (NE062) BEST WIZARD GRAIN



NW072 (NE072) TEAK



NW039 (NE039) ASH



NW070 (NE070) BEST ASH



NW059 (NE059) OAK



※ 컬러의 단위 무늬(반복 무늬)와 확대 이미지를 On-Line에서 만나보세요.
(On-Line 상의 이미지들은 실제 색상과 다를 수 있으니, 실물을 반드시 확인해보세요.)
※ Meet the color unit pattern(repeated) and enlarged images online.
(Images online may differ from actual colors, please check the actual product.)



신제품
New



비방염 컬러 번호
Non-Flame Retardant



시공 유의
Installation Instructions



시공사례
Reference



NW088 (NE088) TEAK



NW006 (NE006) BEST AMAZAHOU



NW042 (NE042) WHITE OAK



NW044 (NE044) BEST WALNUT

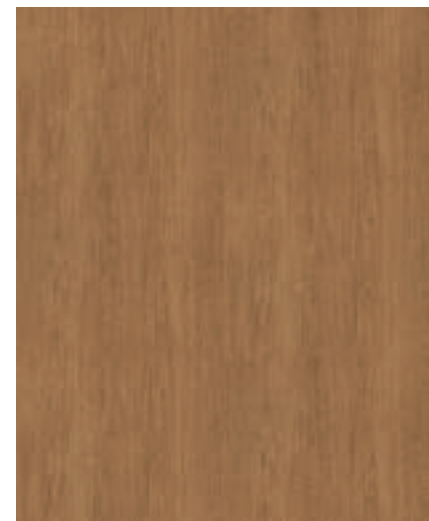


NW034 (NE034) BEST OAK

PREMIUM WOOD



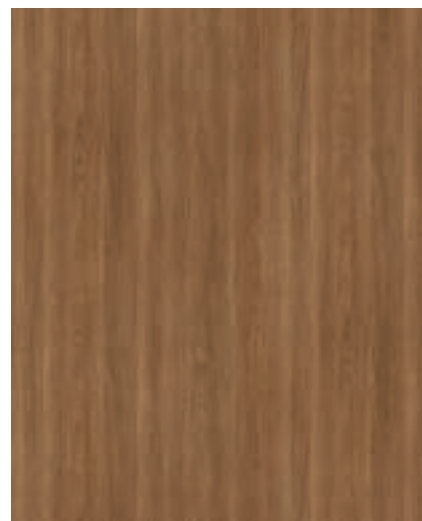
NW058 (NE058) OAK



NW043 (NE043) BEST WHITE OAK



NW067 (NE067) TEAK



NW087 (NE087) OAK



NW045 (NE045) BEST WALNUT



※ 컬러의 단위 무늬(반복 무늬)와 확대 이미지를 On-Line에서 만나보세요.
 (On-Line 상의 이미지들은 실제 색상과 다를 수 있으니, 실물을 반드시 확인해보세요.)
 ※ Meet the color unit pattern(repeated) and enlarged images online.
 (Images online may differ from actual colors, please check the actual product.)



신제품
New



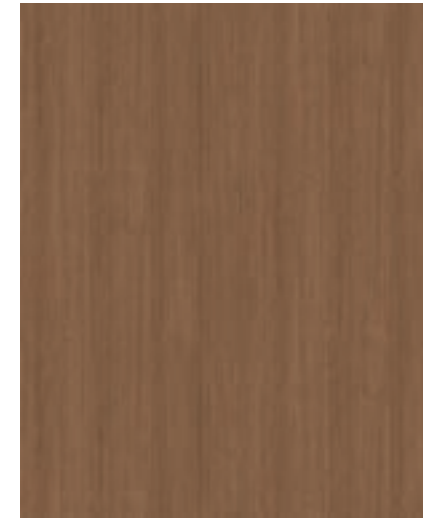
비방염 컬러 번호
Non-Flame Retardant



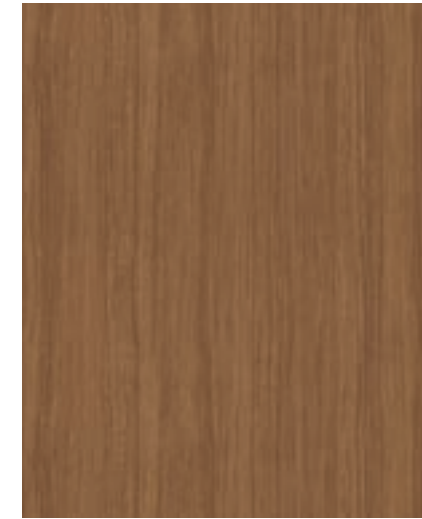
시공 유의
Installation Instructions



시공사례
Reference



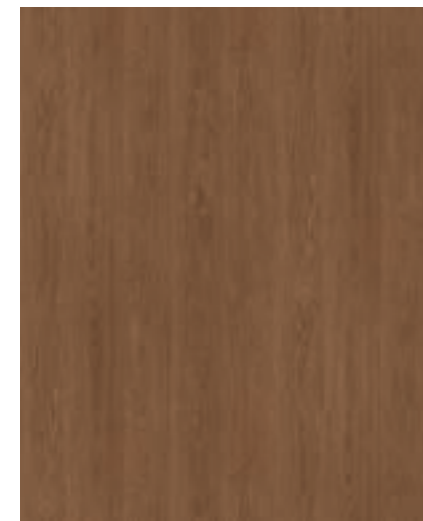
NW060 (NE060) WALNUT



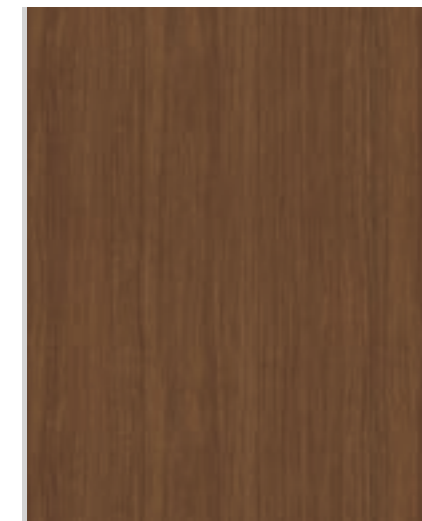
NW007 (NE007) AMAZAHOU



NW063 (NE063) TEAK



NW046 (NE046) BEST WALNUT



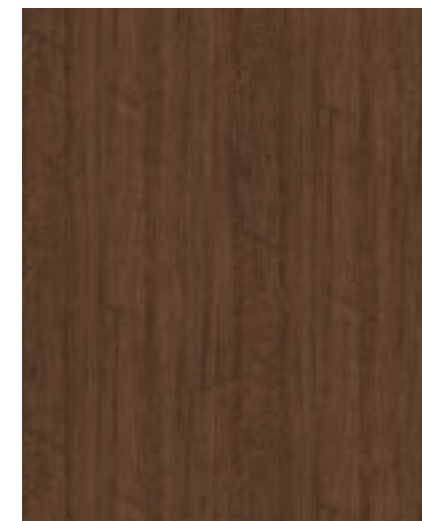
NW008 (NE008) AMAZAHOU



NW104 (NE104) BEST OAK



NW090 (NE090) TEAK



NW055 (NE055) TEAK

WOOD

나무만이 갖고있는 다양한 색채와 친근한 아름다움을 느껴보세요.

Enjoy the variety of colors and familiar beauty that are unique to wood.



DW650



CW511 (EW511) BEST ELM



CW437 (EW437) CHERRY



DW633 (EW633) N OAK



CW424 (EW424) OLIVE LINE



DW406 (EW406) WIZARD GRAIN



DW650 (EW650) N @ ASH



※ 컬러의 단위 무늬(반복 무늬)와 확대 이미지를 On-Line에서 만나보세요.
(On-Line 상의 이미지들은 실제 색상과 다를 수 있으니, 실물을 반드시 확인해주세요.)
※ Meet the color unit pattern(repeated) and enlarged images online.
(Images online may differ from actual colors, please check the actual product.)



신제품
New



비방염 컬러 번호
Non-Flame Retardant



시공 유의
Installation Instructions



시공사례
Reference



DW636



CW606 (EW606) ELM



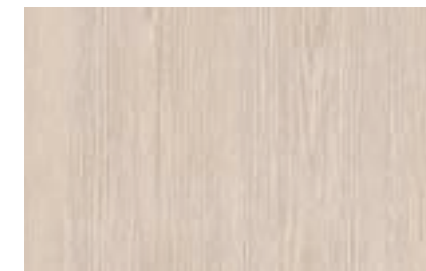
CW611 (EW611) BEST ASH



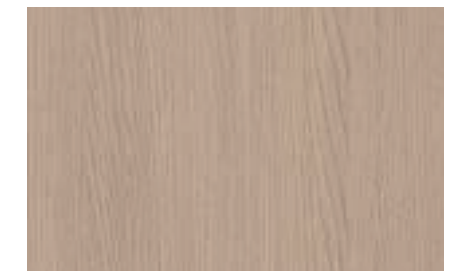
CW390 (EW390) WALNUT



DW648 (EW648) N WHITE OAK



DW647 (EW647) N WASHED OAK



DW636 (EW636) N @ ELM



CW556 (EW556) OAK

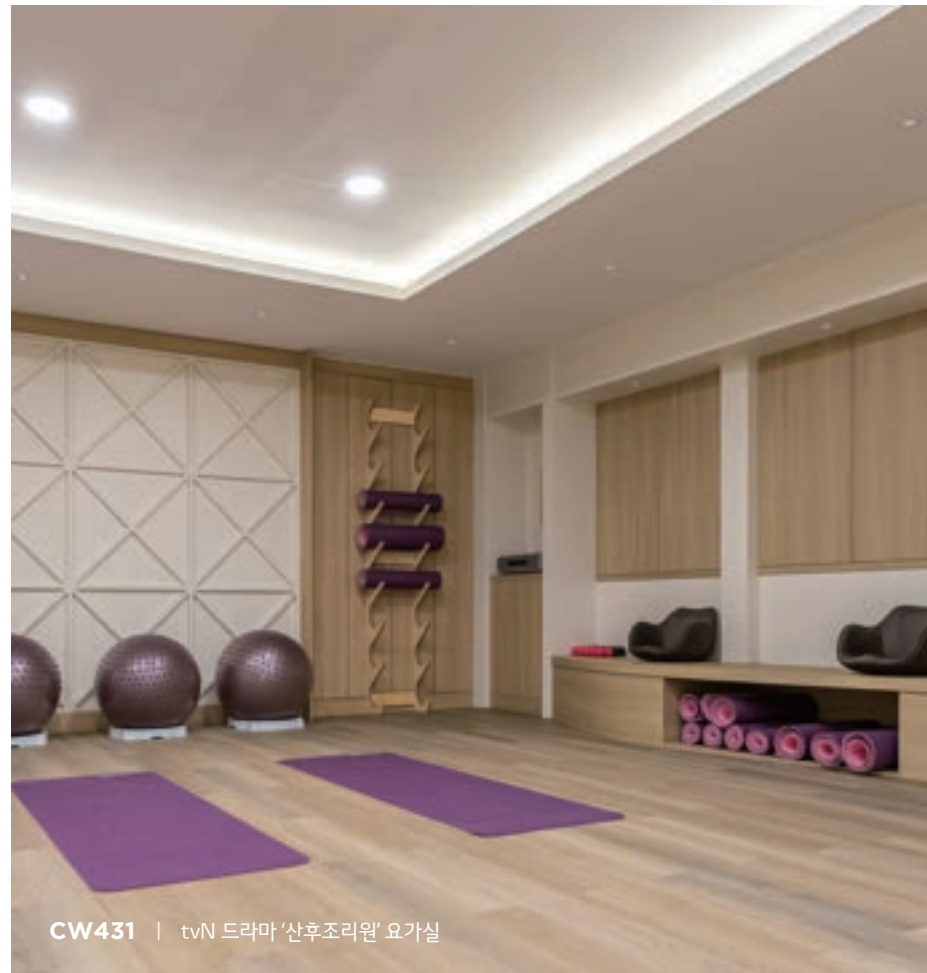


CW510 (EW510) ELM



DW388 (EW388) TEAK

WOOD



CW616 (EW616) ELM



DW635 (EW635) N ASH



CW619 (EW619) OAK



CWPF3 (EWPF3) OAK



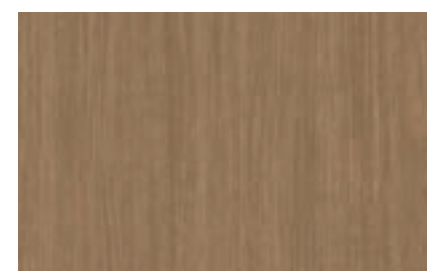
DW637 (EW637) N ELM



CW292 (EW292) OAK



DW456 (EW456) TEAK



CW431 (EW431) G WALNUT



DW634 (EW634) N OAK



※ 컬러의 단위 무늬(반복 무늬)와 확대 이미지들을 On-Line에서 만나보세요.
(On-Line 상의 이미지들은 실제 색상과 다를 수 있으니, 실물을 반드시 확인해보세요.)
※ Meet the color unit pattern(repeated) and enlarged images online.
(Images online may differ from actual colors, please check the actual product.)



신제품
New



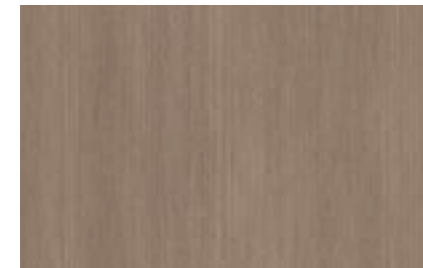
비방염 컬러 번호
Non-Flame Retardant



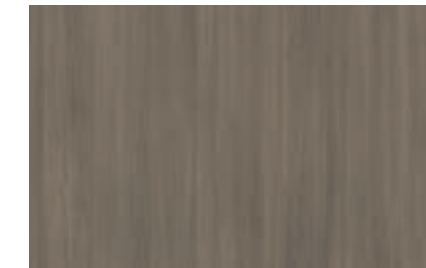
시공 유의
Installation Instructions



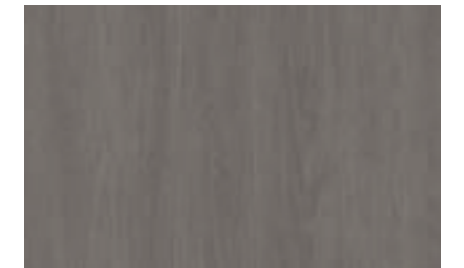
시공사례
Reference



CW407 (EW407) BEST WIZARD GRAIN



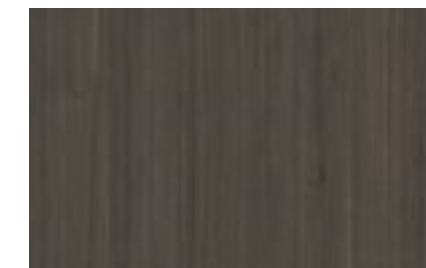
DW638 (EW638) N G ELM



DW649 (EW649) N PAINTED OAK



CW408 (EW408) WIZARD GRAIN



DW467 (EW467) WALNUT



CW624 (EW624) G OAK



WOOD



DW643 (EW643) **N** ASH



CW521 (EW521) PINE



CW544 (EW544) ROSE WOOD



CW530 (EW530) ASH



CW552 (EW552) BIRCH



DW639 (EW639) **N** **e** ASH



※ 컬러의 단위 무늬(반복 무늬)와 확대 이미지를 On-Line에서 만나보세요.
(On-Line 상의 이미지들은 실제 색상과 다를 수 있으니, 실물을 반드시 확인해보세요.)
※ Meet the color unit pattern(repeated) and enlarged images online.
(Images online may differ from actual colors, please check the actual product.)



신제품
New



비방염 컬러 번호
Non-Flame Retardant



시공 유의
Installation Instructions



시공사례
Reference



CW240 (EW240) **BEST** ELM



DW161 (EW161) OAK



CW600 (EW600) ASH



CW597 (EW597) OAK



CW575 (EW575) ASH



CW527 (EW527) MAPLE



CW618 (EW618) WASHED OAK



DW182 (EW182) TEAK



CW509 (EW509) ELM



DW644 (EW644) **N** ASH



DW548 (EW548) **BEST** OAK



CW506 (EW506) TEAK



CW615 (EW615) **BEST** OAK



CW533 (EW533) OAK



CW603 (EW603) OAK

WOOD



CW604 (EW604) WASHED OAK



CW518 (EW518) ASH



CW599 (EW599) OAK



DW549 (EW549) OAK



DW159 (EW159) OAK



DW307 (EW307) OAK



※ 컬러의 단위 무늬(반복 무늬)와 확대 이미지를 On-Line에서 만나보세요.
(On-Line 상의 이미지들은 실제 색상과 다를 수 있으니, 실물을 반드시 확인해보세요.)
※ Meet the color unit pattern(repeated) and enlarged images online.
(Images online may differ from actual colors, please check the actual product.)



신제품
New



비방염 컬러 번호
Non-Flame Retardant



시공 유의
Installation Instructions



시공사례
Reference



CW626 (EW626) BEST OAK



CW151 (EW151) OAK



CW557 (EW557) BEST OAK



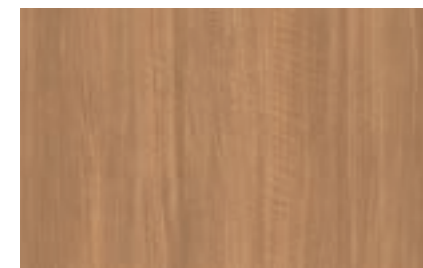
DW640 (EW640) N ASH



DW645 (EW645) N ASH



CW605 (EW605) WASHED OAK



CW512 (EW512) TEAK



CW358 (EW358) CASTAGNO CARDDUCI



DW308 (EW308) OAK



CW441 (EW441) BAMBOO



CW534 (EW534) OAK



DW576 (EW576) ASH



DW179 (EW179) BEST TEAK

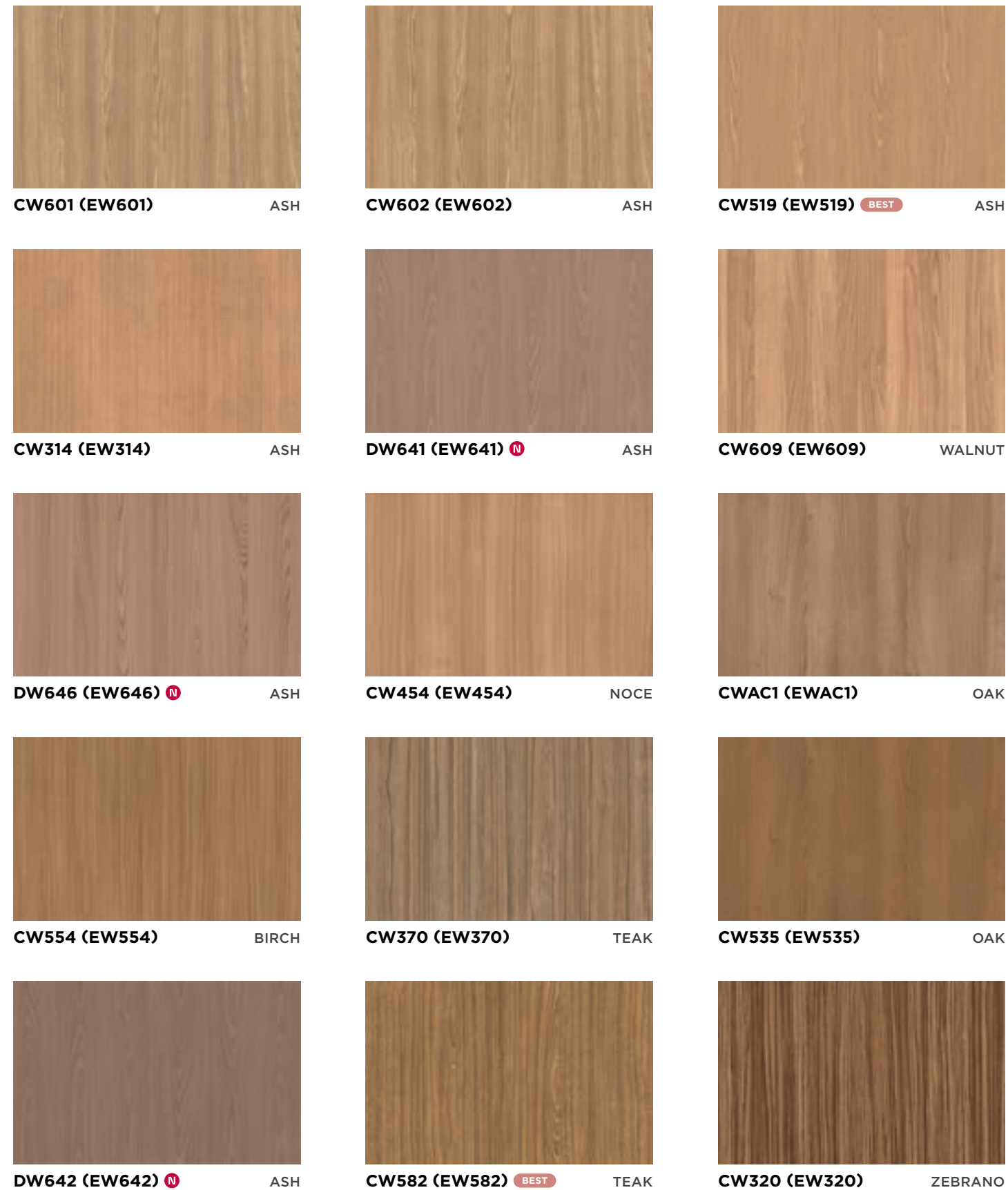


DW550 (EW550) BEST OAK



CWSH2 (EWSH2) OAK

WOOD



※ 컬러의 단위 무늬(반복 무늬)와 확대 이미지를 On-Line에서 만나보세요.
(On-Line 상의 이미지들은 실제 색상과 다를 수 있으니, 실물을 반드시 확인해보세요.)
※ Meet the color unit pattern(repeated) and enlarged images online.
(Images online may differ from actual colors, please check the actual product.)



WOOD



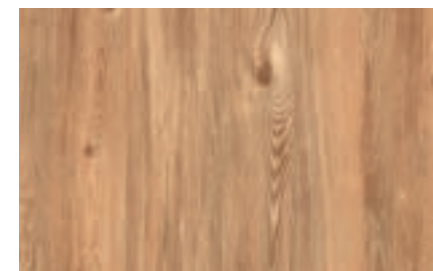
CW598 (EW598) BEST OAK



CW258 (EW258) OAK



DW157 (EW157) MAPLE



DW398 (EW398) GREEN PINE



CW427 (EW427) NOCE



CW79 (EW79) MAPLE



DW350 (EW350) ANEGRE



CW455 (EW455) NOCE



CW124 (EW124) CHERRY



DW180 (EW180) TEAK



CWB1 (EWB1) CHERRY



CW150 (EW150) TEAK



CW111 (EW111) CHERRY



CW69 (EW69) CHERRY



CW44 (EW44) ANEGRE



※ 컬러의 단위 무늬(반복 무늬)와 확대 이미지를 On-Line에서 만나보세요.
(On-Line 상의 이미지들은 실제 색상과 다를 수 있으니, 실물을 반드시 확인해보세요.)
※ Meet the color unit pattern(repeated) and enlarged images online.
(Images online may differ from actual colors, please check the actual product.)



신제품
New



비방염 컬러 번호
Non-Flame Retardant



시공 유의
Installation Instructions



시공사례
Reference



CW537



CW537 (EW537) BEST BIRCH



CW590 (EW590) BIRCH



CW523 (EW523) PINE



DW207 (EW207) TEAK



CW438 (EW438) CHERRY



CW141 (EW141) BEST MAPLE



CW142 (EW142) MAPLE



CW531 (EW531) BEST ASH



CW175 (EW175) OAK



CW453 (EW453) NOCE



CW154 (EW154) BEST TEAK

WOOD



DW631 / CW459



CW621 (EW621) ANTIQUE PAINTED WOOD



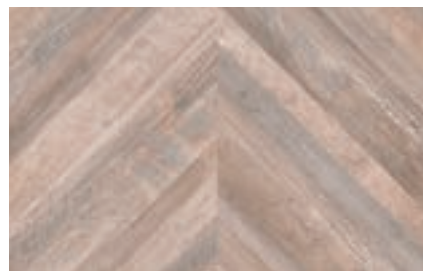
DW631 (EW631) CHEVRON GRAY



CW459 (EW459) THINWIN



CW612 (EW612) SCRAP WOOD



DW629 (EW629) CHEVRON PAINTED



DW400 (EW400) ANTIQUE PINE



CW622 (EW622) ANTIQUE PAINTED WOOD



※ 컬러의 단위 무늬(반복 무늬)와 확대 이미지를 On-Line에서 만나보세요.
(On-Line 상의 이미지들은 실제 색상과 다를 수 있으니, 실물을 반드시 확인해보세요.)
※ Meet the color unit pattern(repeated) and enlarged images online.
(Images online may differ from actual colors, please check the actual product.)

N
신제품
New

()
비방염 컬러 번호
Non-Flame Retardant

!
시공 유의
Installation Instructions

📖
시공사례
Reference



SW001 ASH



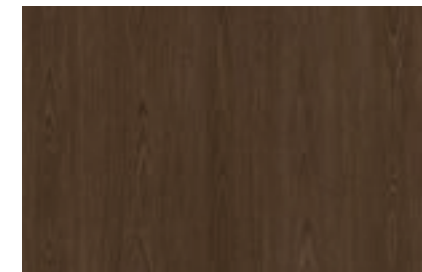
SW004 OAK



SW005 OAK



SW002 ASH



SW006 OAK



SW003 ASH



SW005

BIG MARBLE

빅 슬랩의 커다랗고 웅장한 마블링과 곧게 뻗은 크랙의 숨결을 느껴보세요.

Feel the big and magnificent marbling of the big slab and the breath of the straight stretched crack.

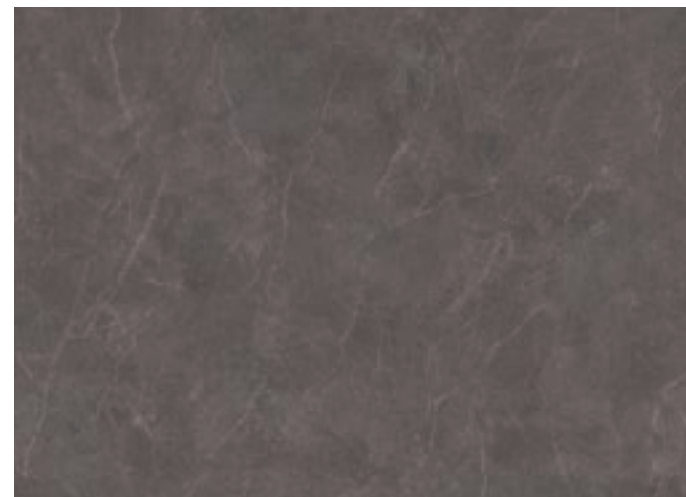


BM009



BM009 **N** **@**

GALAXY MARBLE



BM010 **N**

GALAXY MARBLE



※ 컬러의 단위 무늬(반복 무늬)와 확대 이미지들을 On-Line에서 만나보세요.
(On-Line 상의 이미지들은 실제 색상과 다를 수 있으니, 실물을 반드시 확인해주세요.)
※ Meet the color unit pattern(repeated) and enlarged images online.
(Images online may differ from actual colors, please check the actual product.)



신제품
New



비방염 컬러 번호
Non-Flame Retardant



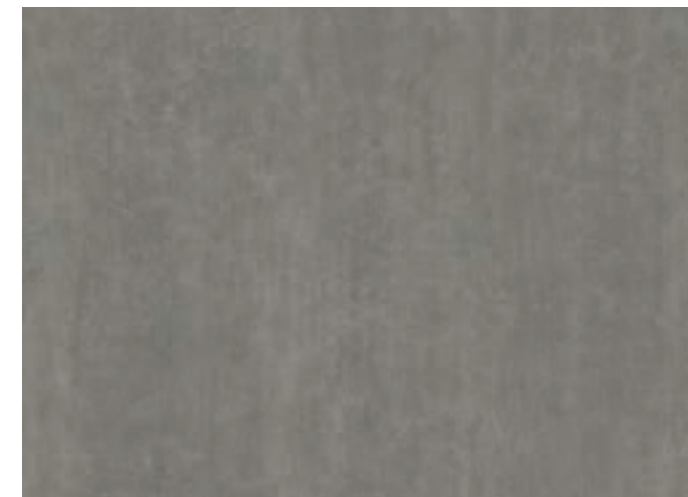
시공 유의
Installation Instructions



시공사례
Reference



BM011



BM011 **N** **@**

BULKY CONCRETE



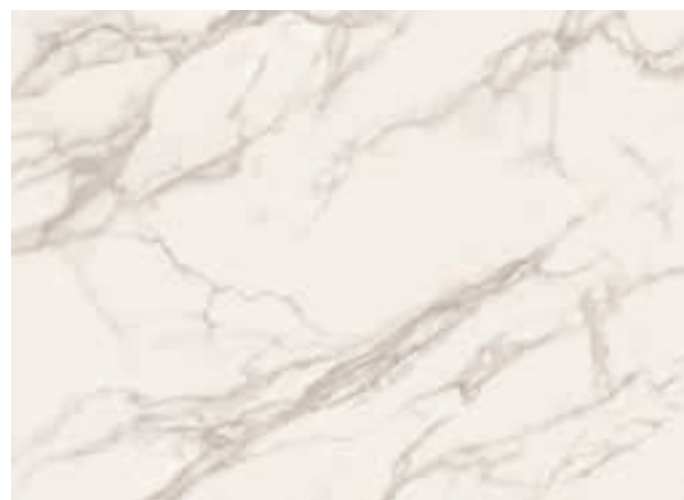
BM012 **N**

BULKY CONCRETE

BIG MARBLE

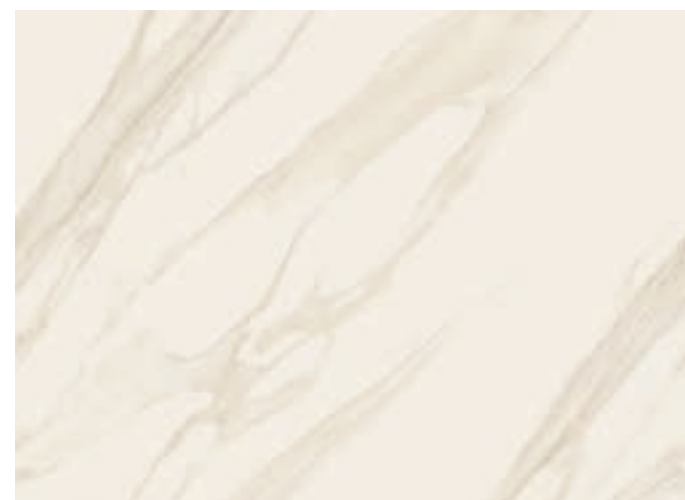


BM006 | LX지인 인테리어 지인스퀘어 강남



BM007

ARABESCATO



BM008

BORGHINI



※ 컬러의 단위 무늬(반복 무늬)와 확대 이미지들을 On-Line에서 만나보세요.
(On-Line 상의 이미지들은 실제 색상과 다를 수 있으니, 실물을 반드시 확인해주세요.)
※ Meet the color unit pattern(repeated) and enlarged images online.
(Images online may differ from actual colors, please check the actual product.)



신제품
New



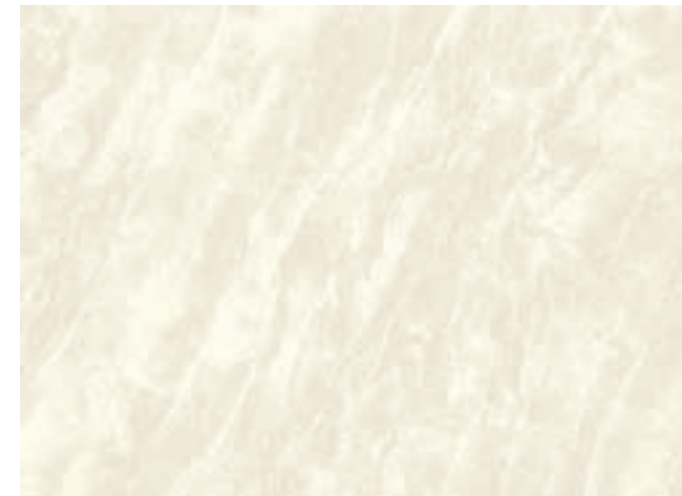
비방염 컬러 번호
Non-Flame Retardant



시공 유의
Installation Instructions



시공사례
Reference



BM001

LIGHT MARBLING



BM002

MARBLING



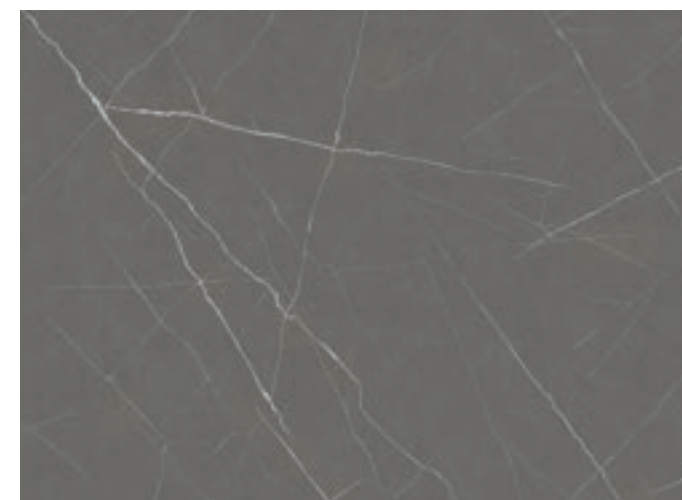
BM003

GRAY MARBLE



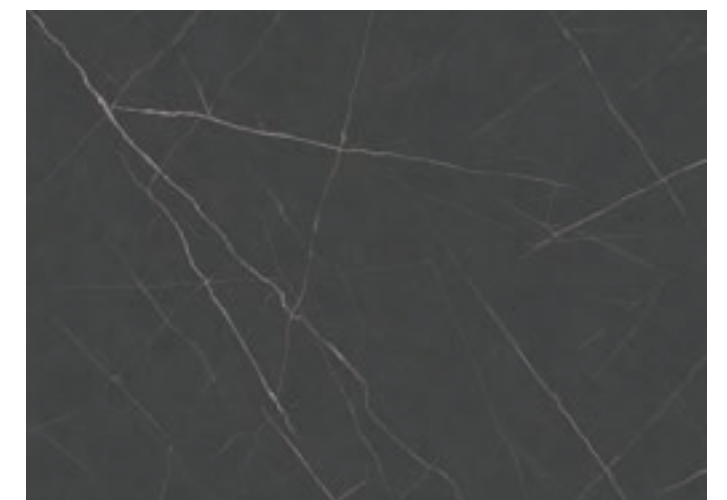
BM004

DARK GRAY MARBLE



BM005

MARQUINA



BM006

MARQUINA

MARBLE / STONE

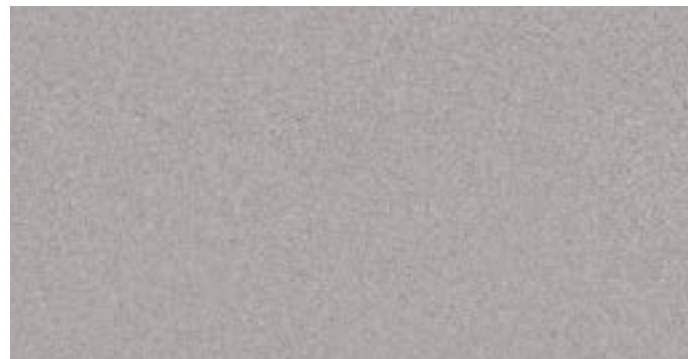
유럽풍의 고급스런 대리석과 스톤의 리얼한 터치감을 느껴보세요.
 Feel the realistic sense of touch of European-style luxury marble and stone.



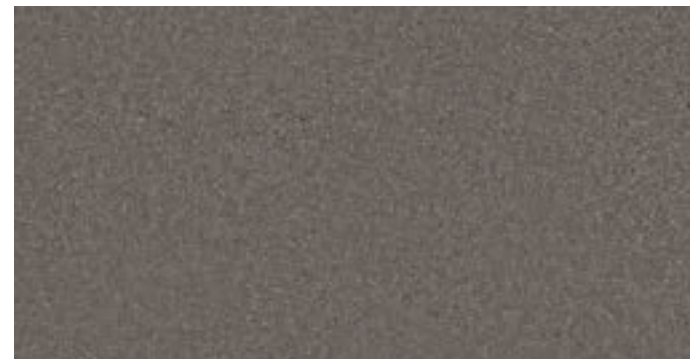
ML77 **N** SAND STONE



ML75 **N** **E** SAND STONE



ML76 **N** SAND STONE



ML80 **N** SAND STONE



ML75



※ 컬러의 단위 무늬(반복 무늬)와 확대 이미지들을 On-Line에서 만나보세요.
 (On-Line 상의 이미지들은 실제 색상과 다를 수 있으니, 실물을 반드시 확인해보세요.)
 ※ Meet the color unit pattern(repeated) and enlarged images online.
 (Images online may differ from actual colors, please check the actual product.)



신제품
New



비방염 컬러 번호
Non-Flame Retardant



시공 유의
Installation Instructions



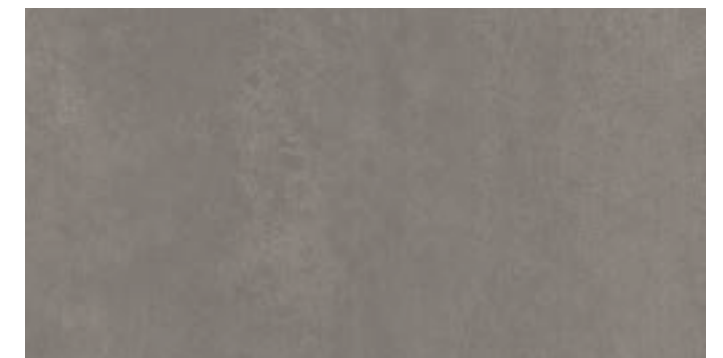
시공사례
Reference



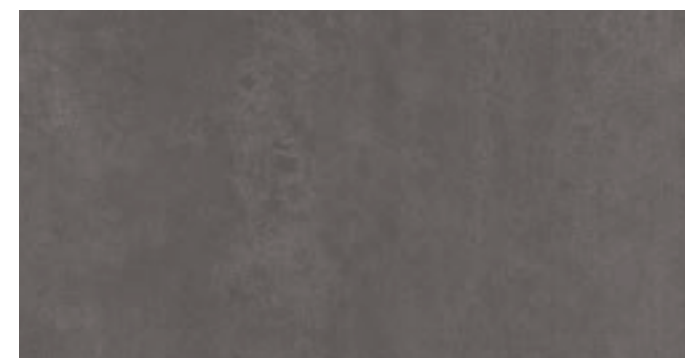
ML72



ML71 **N** OXIDADO STONE



ML72 **N** **E** OXIDADO STONE



ML74 **N** OXIDADO STONE



ML73 **N** OXIDADO STONE

MARBLE / STONE



※ 컬러의 단위 무늬(반복 무늬)와 확대 이미지를 On-Line에서 만나보세요.
 (On-Line 상의 이미지들은 실제 색상과 다를 수 있으니, 실물을 반드시 확인해보세요.)
 ※ Meet the color unit pattern(repeated) and enlarged images online.
 (Images online may differ from actual colors, please check the actual product.)

N 신제품 New
() 비방염 컬러 번호 Non-Flame Retardant
! 시공 유의 Installation Instructions
👁 시공사례 Reference



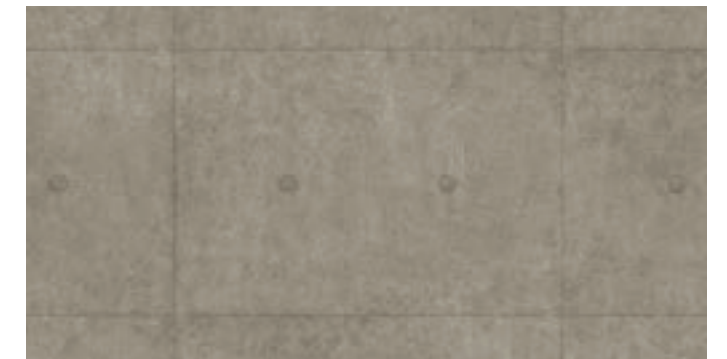
EL178 **!** SOLID CONCRETE(BEIGE)



EL177 **BEST** **!** SOLID CONCRETE(GRAY)



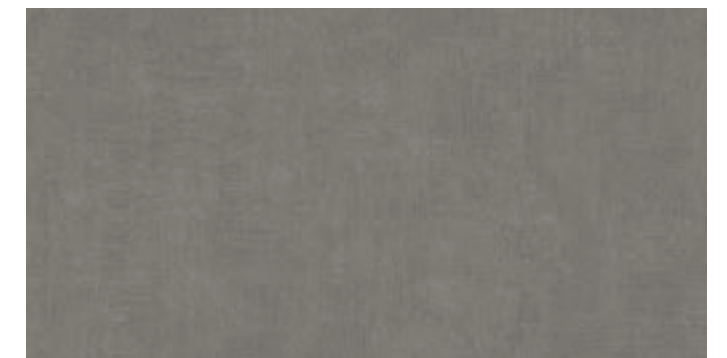
ML62 PLASTERED WALL BRUSH(LIGHT GRAY)



NS002 CONCRETE(WARM GRAY)



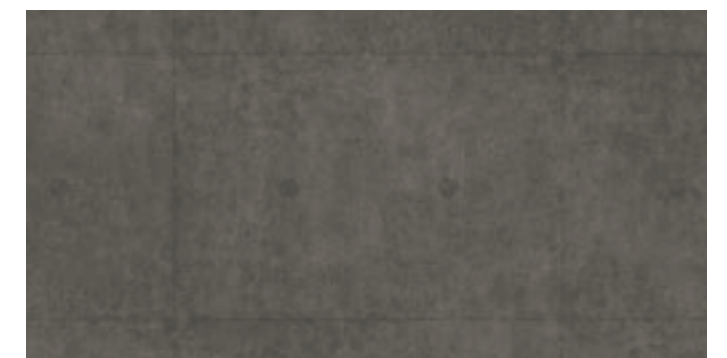
ML22 RUSTIC BRONZE



ML64 PLASTERED WALL BRUSH(COOL GRAY)



EL176 **!** **👁** SOLID CONCRETE(DARK GRAY)

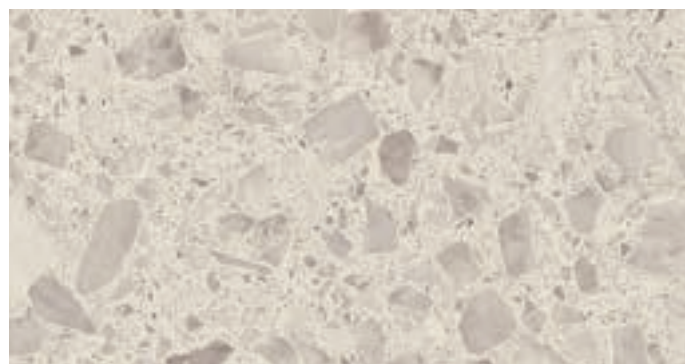


NS003 CONCRETE(DARK GRAY)

MARBLE / STONE

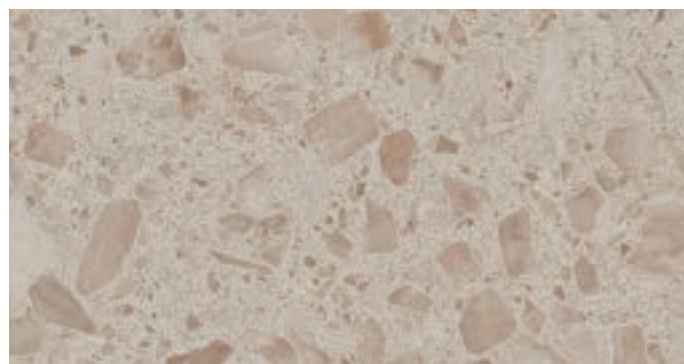


ML82



ML82 N G

TERAZZO



ML81 N

TERAZZO



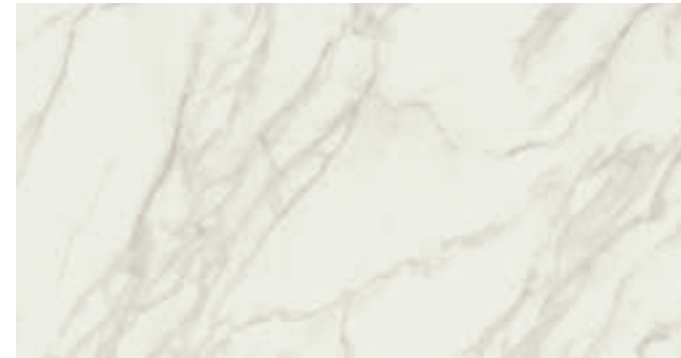
※ 컬러의 단위 무늬(반복 무늬)와 확대 이미지를 On-Line에서 만나보세요.
(On-Line 상의 이미지들은 실제 색상과 다를 수 있으니, 실물을 반드시 확인해보세요.)
※ Meet the color unit pattern(repeated) and enlarged images online.
(Images online may differ from actual colors, please check the actual product.)

N
신제품
New

()
비방염 컬러 번호
Non-Flame Retardant

!
시공 유의
Installation Instructions

G
시공사례
Reference



ML67 BEST

BIANCO CARRARA(WHITE)



RM12 BEST

MARBLE



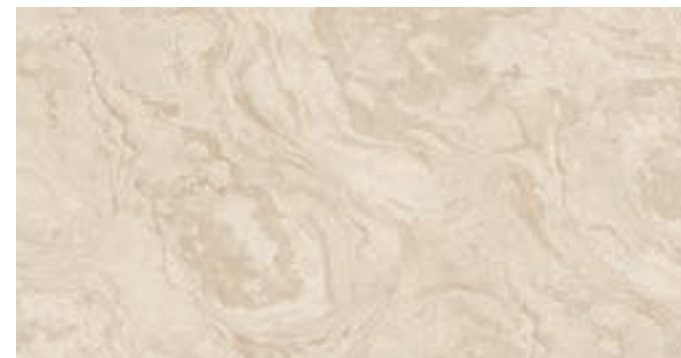
ML56 BEST

TRAVERTINE(WHITE)



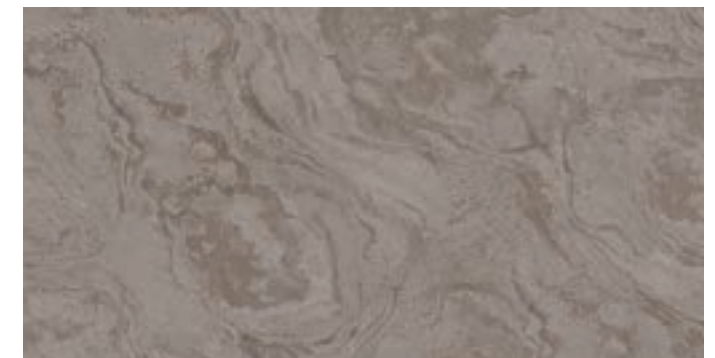
ML57

TRAVERTINE(WARM GRAY)



ML23

STONE



ML24

STONE



ML58

TRAVERTINE(DARK GRAY)

FANCY / LEATHER

따뜻한 패브릭만의 숨결과 레더만의 고급스러운 질감으로 아늑한 분위기와 럭셔리한 공간을 연출합니다.

A cozy atmosphere and luxurious space are created with the warm breath of fabric and the sophisticated texture of leather.



ML47 LINEN(GRAY)



ML49 TWEED(LIGHT GRAY)



ELO43 STRING WAVE(LIGHT BEIGE)



ML45 LINEN(HAZELNUT)



EL235 CLASSIC(GRAY WOLF)



ELO44 STRING WAVE(DARK GRAY)



ML48 LINEN(DEEP GRAY)



ELO51 CLASSIC(PINK BEIGE)



ELO49 STRING WAVE(METAL)



※ 컬러의 단위 무늬(반복 무늬)와 확대 이미지들을 On-Line에서 만나보세요.
(On-Line 상의 이미지들은 실제 색상과 다를 수 있으니, 실물을 반드시 확인해주세요.)
※ Meet the color unit pattern(repeated) and enlarged images online.
(Images online may differ from actual colors, please check the actual product.)



신제품
New



비방염 컬러 번호
Non-Flame Retardant



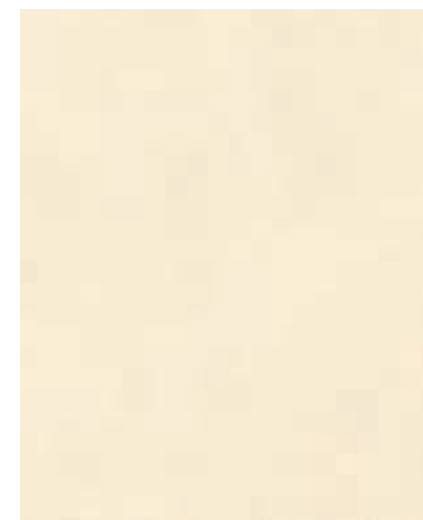
시공 유의
Installation Instructions



시공사례
Reference



ML31 / ML13



ML31 WARM BEIGE



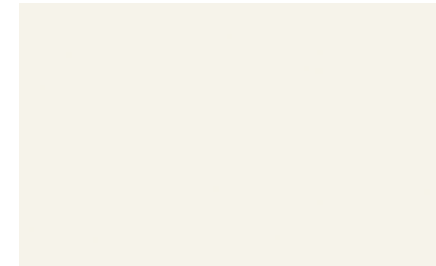
ML13 MIDDLE BROWN



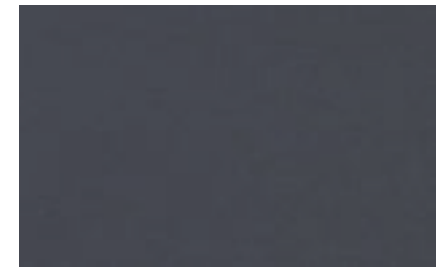
ML14 DARK BROWN

OUTDOOR

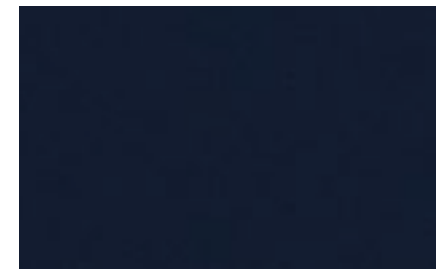
건물 외부에 부착하는 제품으로, 독일 RAL 인증 받은 필름으로 되어 있어, 옥외 조건에 사용하기 적합합니다.
 This product is attached to the outside of a building. It is made of a film certified by RAL in Germany, so it is suitable for use in outdoor conditions.



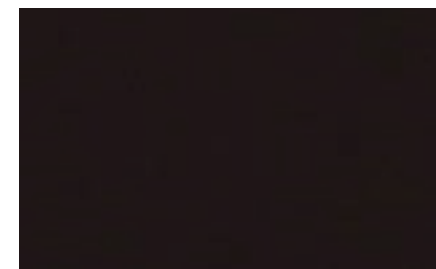
(US001) SAND(WHITE)



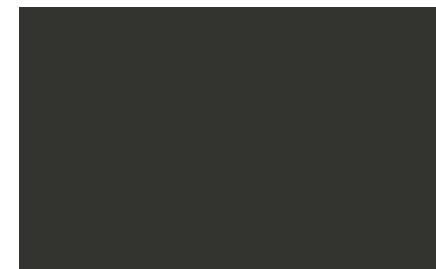
(US005) SAND(CHARCOAL)



(US003) SAND(DEEP BLUE)



(US004) SAND(DEEP BROWN)



(US002) SAND(BLACK)



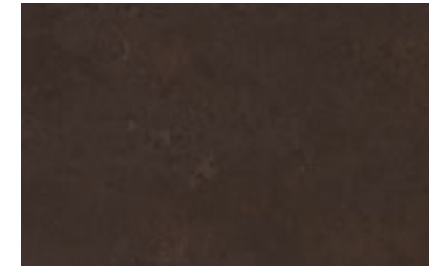
N 신제품 New
() 비방염 컬러 번호 Non-Flame Retardant
! 시공 유의 Installation Instructions
📄 시공사례 Reference



(UP001) TRAVERTINE(BEIGE)



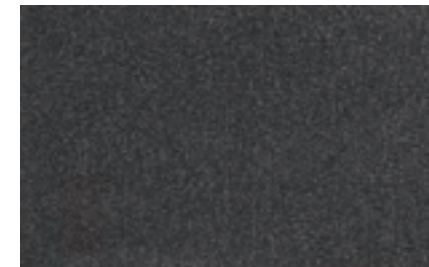
(UP002) WOOD(MERSEY OAK)



(UP003) RUSTIC METAL(DEEP BROWN)



(UM002) SAND(OLIVE GRAY)



(UM001) SAND(DARK GRAY)



! APPLICATION INSTRUCTIONS

1. Preliminary work

- It is necessary to check the type and condition of the adherend(MDF, etc.) on which the film is applied to see if any problems may occur during application.
 - In the case of MDF, it is recommended to use MDF with uniform density, as the difference in application adhesion and flame retardant performance occurs depending on the density.
 - The painted surface should be cleaned with alcohol to remove contaminants and checked for damage to by the solvent. The uneven areas should be polished with sand paper after puttying treatment and foreign matters should be removed with a dust brush.
 - For iron plates, after removing contaminants from the surface with alcohol or lacquer, the uneven areas caused by welding should be treated by puttying. Foreign matters should be removed with a dust brush after polishing the surface with sand paper.
- It is necessary to perform preliminary inspection on whether the product selected by the consumer has defects. (pattern name, appearance, etc.)
- Film application should be carried out after wood application and before painting and wall papering.

2. Surface Pre-work

- The cross-section(cutting) part of the adherend(MDF, etc.) where the film will be applied must be sufficiently polished with sandpaper.
 - In particular, in the case of wood(MDF, PB, etc.), smoothness of the bent and joint parts is important. Therefore, if the surface condition is rough after inspecting in advance, it must be sufficiently polished with sandpaper or putty treatment before application.

3. Primer treatment

- For the primer treatment, the cut surface of wood(MDF, PB, etc.) among the adherends has a high primer absorption rate, so the primer should be applied 2-3 times. Overlapping is done after the primer applied before has been completely dried.

4. Application Methods

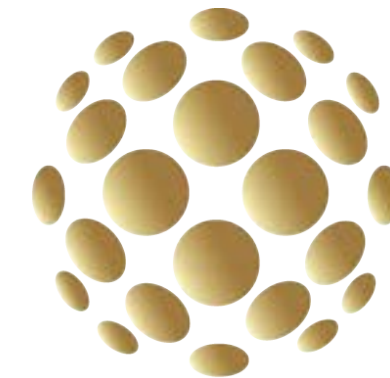
- During application, the cut surface of the film should not be visible as much as possible.
- Film should be applied in a way that the substrate is not visible as much as possible.
- **Color differences may occur between product lots, so it is necessary to sort the lots for installation.**
- The site temperature should be maintained at 15-25°C from 72 hours before application to 48 hours after application. In winter, if the product is left outside, adhesion may decrease due to a drop in temperature.

5. Application Instructions for Specific products

SW, EL, LE, PL	- These products do not have a surface film layer but only did surface treatment. If you strongly rub the corners with wool felt or cotton gloves, the printed layer may be damaged, so please use with caution. - Due to the surface treatment layer, it may slip when film is overlapped. Therefore, the application should be done after applying the water-based primer PM-04 undiluted solution and drying it sufficiently.
US, UM, UP	- Outdoor products must be installed in compliance with separate specification standard.
NS	- This film features deep embossing to realize the texture of brick and concrete. - In the case of overlapping application, the adhesive strength decreases due to the depth of the emboss, so apply a primer after attaching it with masking tape. - After the primer treatment, the product must be sufficiently compressed to the surface for stability in application, so please pay attention to this point.
HIGH GLOSS	- In order to properly reproduce the gloss effect on the film surface, application must be done in a clean environment. - If application is performed with foreign substances(dust, dirt, etc.) on the adherend(MDF, etc.) and the film adhesive surface, surface imprints or protrusion marks may occur on the film surface. - Since the product has high hardness, it should be finished perfectly by applying more force to prevent the edges from being lifted and to realize a clean visual effect.

6. Others

- Film application must be carried out according to the application standards of the specification.
- For application methods and adherends(MDF, etc.), in case of the application on a different type of adherend from the specifications, you must contact LX Hausys or a vendor to confirm the possibility of application.
 - Air bubbles may occur during application on acrylic adherends, so please check with LX Hausys or a vendor before application
- In case of the film application, you should use the water-based primer PM-04 of LX Hausys.
- Shelf Life of LX Hausys BENIF is 2years form the date of production. This Product has to be kept away form high temp., humidity and direct sunlight. (Recommended storage condition : 20°C x 50% R.H)



ADHESIS

LA DÉCORATION ADHÉSIVE